

HUDDLE ROOM

CRESTRON .AV FRAMEWORK™



The huddle room is a smaller room or breakout space with a table, phone, display and whiteboard. It's the ideal location for people who just need a quiet place to get together and collaborate.

It's designed for groups of two to eight people to work comfortably. The huddle room is the most common space built in today's enterprise and is designed to fit the needs of the modern office worker. While rooms of this type have been built for many years, only recently are organizations realizing the necessity of adding technology to these rooms.

Huddle Room

CRESTRON .AV FRAMEWORK

This newer room style:

- > Encourages essential teamwork
- > Provides a space for quick deliberation
- > Increases productivity

This room needs to support the following functions:

- > Share content wirelessly from a tablet, smartphone or laptop
- > Present in the highest resolution video formats
- > See the availability of the room and book it if needed
- > Real-time monitoring and troubleshooting of room's technology by IT

Crestron has designed this room to meet all of the above needs, in an economical, simple, scalable way. This is Crestron's huddle space solution for elevating productivity in smaller rooms.

Key Products

Qty	Product ID	Product	Preview
1	PP-100	PinPoint™ location beacon	①
1	TT-101-B	Table top connectivity solution	②
1	AM-100	AirMedia™ wireless presentation solution	③
1	DM-DGE-200-C	Digital graphics engine	④
1	DM-TX-201-C	HD transmitter	⑤



PP-100
PinPoint™ enhances the intelligence and personalization of your Crestron® system by enabling your iPhone® or iPad® to always know what room you're in.



TT-101-B
Crestron Connect It™ offers a cost-effective, simple-to-use presentation solution that provides plug-and-play connectivity, cable management, and one-touch control.



AM-100
The only enterprise-grade wireless presentation solution that is guaranteed not to interfere with existing Wi-Fi® infrastructure, support standard network protocols, and control whose content is displayed.



DM-DGE-200-C

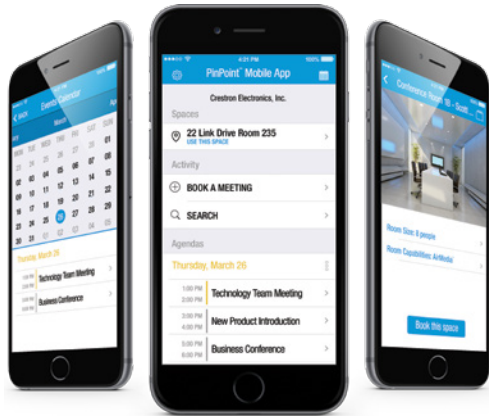
The ultimate room box features streaming H.264 video, 4K over HDBaseT®, and HDMI® inputs, transmits 4K over HDMI, delivers customizable 4K onscreen graphics and dynamic text, display control, and direct connectivity with Crestron Fusion®.



DM-TX-201-C

Provides connectivity for HDMI and RGB sources, and transmits HD long distance over HDBaseT®.

Crestron PinPoint Mobile app



Find a room anytime you need one

The new Crestron PinPoint™ Mobile app makes enterprise technology a personal tool that you carry in the palm of your hand. Now, you can find and book any type of space you need with a few swift clicks on your phone.

A warm, welcoming experience

When entering the room you're presented with the PinPoint Room Experience on the main display which tells you the schedule of the room and ways to present in the space. No longer are you faced with a blank screen and frustrated that you can't figure out how to use the room.

The room interface also provides a clear indication of whether the space is available, and gently reminds you when your meeting time is almost up.



Smart wireless presentation

You can present wirelessly on the room display from virtually any smart device using Crestron AirMedia™. Using PinPoint location beacons, your smart device also knows which display you're near and will present your content on that display with one button press.

No-compromise 4K video

You can present in the room from a wired laptop source using VGA, DisplayPort or HDMI® and get zero-latency beautiful video on the screen at up to 4K resolution. Your investment in the room is insured against obsolescence even longer by supporting the latest video formats.

Drop-in-place simplicity

The Crestron .AV Framework™ platform is the foundation of the intelligent enterprise and this huddle room. The entire room can be configured in just a few minutes with no programming. The infrastructure is easy to install, always available, easy to use, scalable, repeatable, and manageable.

Zero-footprint solution

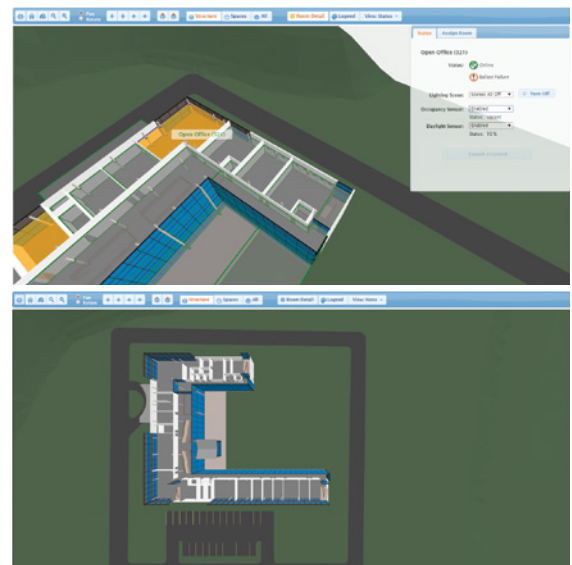
In the modern enterprise, space is at a premium, so Crestron's huddle room is designed to require no rack space. The entire system can be installed discreetly in a small space behind a display or under a table.

Centralized monitoring and control

The huddle space automatically ties into Crestron's cloud-based or on-premises Crestron Fusion® monitoring and management technology. Crestron Fusion provides immediate alerts when an equipment failure is detected, such as an unplugged cable – so that it can be proactively corrected before it impacts the user.

Within Crestron Fusion, Fusion Insite™ provides managers with interactive, real-time 360-degree 3D visualization of entire buildings across the enterprise, the status of the individual spaces within them, and all the technology in the rooms.

Crestron Fusion 3D management software



Making data work for you

Crestron's Huddle Room solution sends usage and maintenance data to the Crestron Fusion monitoring solution, enabling you to see how often rooms and equipment are used (or abused – or at least overbooked, in the case of rooms) and where your failures occur most. Knowledge is power, and the Crestron huddle room is empowering you with the data you need to increase productivity and efficiency.

**For more information,
contact Crestron Tech Sales**

techsales@crestron.com | 1.888.273.7876

Crestron Electronics

15 Volvo Drive, Rockleigh, NJ 07647
Phone 800.237.2041 • Fax 201.767.1903
crestron.com

Products manufactured in the United States. Printed in USA 2015-06

All brand names, product names, and trademarks are the property of their respective owners. Certain trademarks, registered trademarks, and trade names may be used in this document to refer to either the entities claiming the marks and names or their products. Crestron disclaims any proprietary interest in the marks and names of others. Crestron is not responsible for errors in typography or photography. ©2015 Crestron Electronics, Inc.

