

DM[®] NVX NETWORK MINIMUM REQUIREMENTS & RECOMMENDATIONS

The DM NVX Series network AV solution uses standard 1 Gigabit Ethernet. While no specific manufacturer or model of Ethernet switch is required, there are minimum requirements that need to be met for a successful installation.

■ MINIMUM NETWORK REQUIREMENTS

Network switch

- › 1 Gigabit port for every connected DM NVX endpoint
- › Non-blocking backplane
- › Layer 2 or 3
- › IGMPv2 implemented

Network switch settings

- › IGMPv2 snooping enabled
- › IGMPv2 querier enabled
- › Fast-leave enabled (also known as immediate-leave)

If DM NVX video traffic will traverse inter-switch uplinks:

- › The uplinks must have sufficient bandwidth for all encoders and decoders on the switch. Allocate 1 Gigabit per encoder or decoder attached to the switch.
- › Uplinks must be properly configured to support multicast traffic

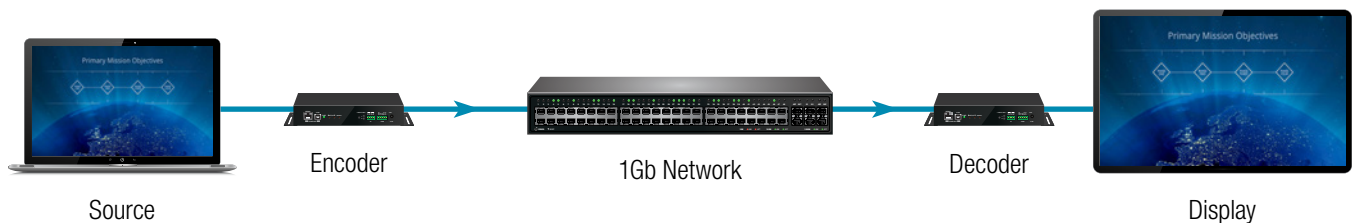
Audio Video Bridging (AVB) is not required for operation of DM NVX.

■ RECOMMENDATIONS

Use switches that support 802.1x for endpoint authentication to ensure that only authorized endpoints can communicate with the network.

Use Active Directory[®] (AD) to centrally manage device administration credentials

- › Create an AD group responsible for device administration
- › Add device administrators to the group
- › Add the group to the DM NVX on the “Device” page of the web interface



For more details, please see the DM NVX Design Guide (Doc # 7977B) available at crestron.com/NVX