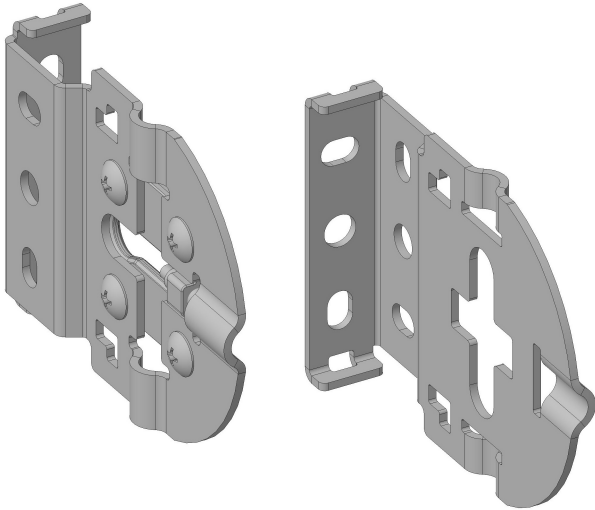


QMT3 Series Décor Shade Hardware



Brackets for motorized shades shown

- *Modern-looking hardware for outside or inside-mounted roller shades*
- *Compact design, takes up less space on mounting surface*
- *Adjustable brackets for shade leveling without any hardware removal*
- *Decorative end caps fit over mounting brackets and come in a variety of color options*
- *Designed for use with Crestron CSM-QMTDC-163-1 Digital QMT® motors¹*
- *Optional brackets for manually operated shading solutions*

QMT3 Series Décor Shade Hardware from Crestron® is a compact mounting system that allows a shade to be installed on a wall, ceiling, or window jamb. With the entire shade exposed, the space is given a contemporary look. The hardware is designed for use with the compact Crestron CSM-QMTDC-163-1 Digital QMT® motor¹.

The QMT3 Series Décor Shade Hardware also includes shade brackets for manual operation. Manually operated shades are a cost-effective solution for any shading application. Whether for installations in which motorized shades are unnecessary or not feasible, or as a stop-gap before upgrading to motorized shades, manual shades offer the small profile and reliable, easy-to-install hardware of a Crestron shading solution with minimum effort.

To enhance child safety, the manual clutch roller shades are equipped with a Chainhold Tension Device. This device is integrated into the product during manufacturing and cannot be removed without breaking. The chainhold tension device maintains tension on the chain when installed.

An adjustable plate on the mounting brackets lets the idler end of the roller shade be moved up and down without having to remove the mounting brackets from the wall, allowing an installer to compensate for mounting conditions that are not level. The QMT motor snaps into the bracket and has a quick release button to make installation and removal quick and

easy, without the need for special tools. End caps slide onto the mounting brackets for a more finished look.

Crestron offers three hembar options: half-wrap, open pockets, or sealed pockets.

- Half-wrap hembars are wrapped in the same material as the roller shade, creating a seamless and cohesive look. They include a flush-mount end cap that enhances the overall aesthetic. This option is available in select fabric collections within the Designer and Heritage Collections.
- Open pockets are an appropriate choice when a designer does not want to add an additional architectural element to a partially drawn shade. In this style, the hem pocket has an opening at each end. Hembar end caps are supplied with an open pocket hembar order, providing a finished look to the ends of the shade fabric.
- Sealed pockets are most commonly found in commercial applications. The sealed ends have a pinched look and are less desirable in residential applications.

NOTE: The CSS-DECOR3 is sold as part of a custom-configured product and orders are placed via the Crestron® Design Tool for Crestron Shading Solutions. To configure shades or order shading parts and accessories, please use the Crestron Design Tool for Crestron or call 1-855-53-S-H-A-D-E (537-4233) for support.

Models

CSS-DECOR3

QMT3 Series Décor Shade Hardware

Available Accessories

For a list of available accessories, visit the [CSS-DECOR3](#) product page.

Note:

1. Available in models [CSM-QMTDC-163-1-CN](#) and [CSM-QMTDC-163-1-EX](#).

This product may be purchased from select authorized Crestron dealers and distributors. To find a dealer or distributor, please contact the Crestron sales representative for your area. A list of sales representatives is available online at www.crestron.com/How-To-Buy/Find-a-Representative or contact us for additional information by visiting www.crestron.com/contact/our-locations for your local contact.

The original language version of this document is U.S. English. All other languages are a translation of the original document.

The product warranty can be found at www.crestron.com/warranty.

The specific patents that cover Crestron products are listed online at www.crestron.com/legal/patents.

Certain Crestron products contain open source software. For specific information, please visit www.crestron.com/opensource.

QMT3 Series Décor Shade Hardware

Crestron, the Crestron logo, and QMT are either trademarks or registered trademarks of Crestron Electronics, Inc. in the United States and/or other countries. Other trademarks, registered trademarks, and trade names may be used in this document to refer to either the entities claiming the marks and names or their products. Crestron disclaims any proprietary interest in the marks and names of others. Crestron is not responsible for errors in typography or photography.

Specifications are subject to change without notice.

©2025 Crestron Electronics, Inc.

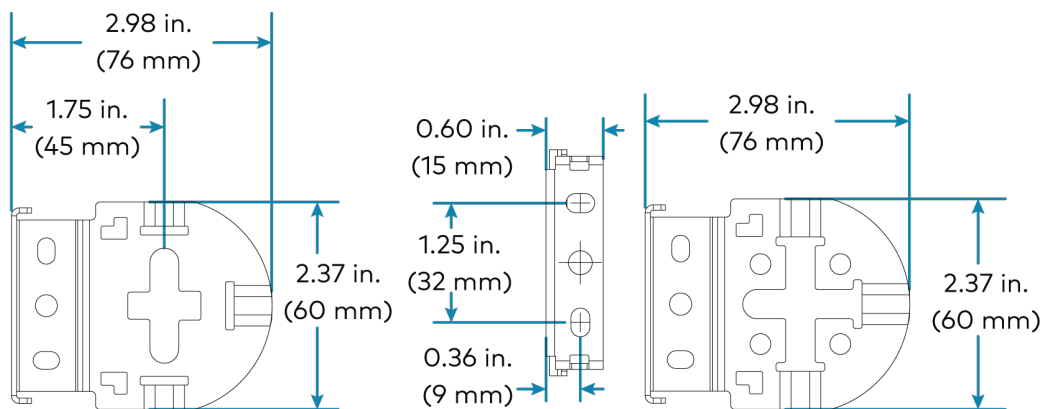
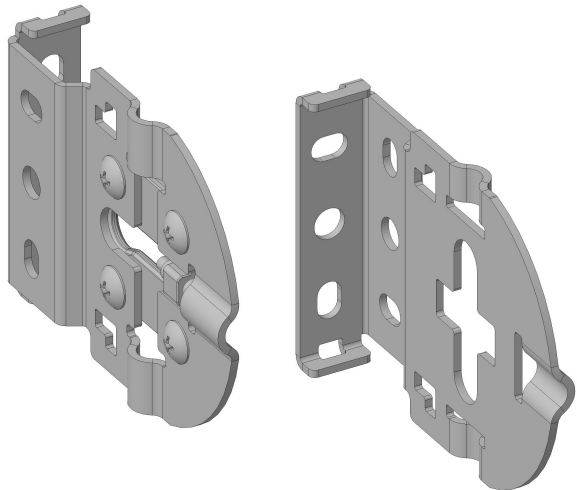
Rev 10/06/25

CSS-DECOR3

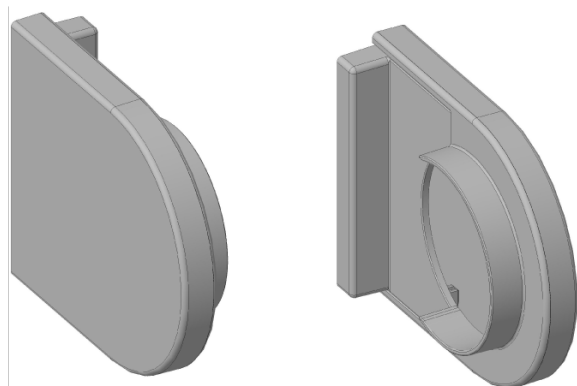
QMT3 Series Décor Shade Hardware

CSS-DECOR3 Bracket, Motorized (Motor and Idler)

Available finish: Black only



CSS-DECOR3 End Caps, Motorized



End Caps (Qty 2)

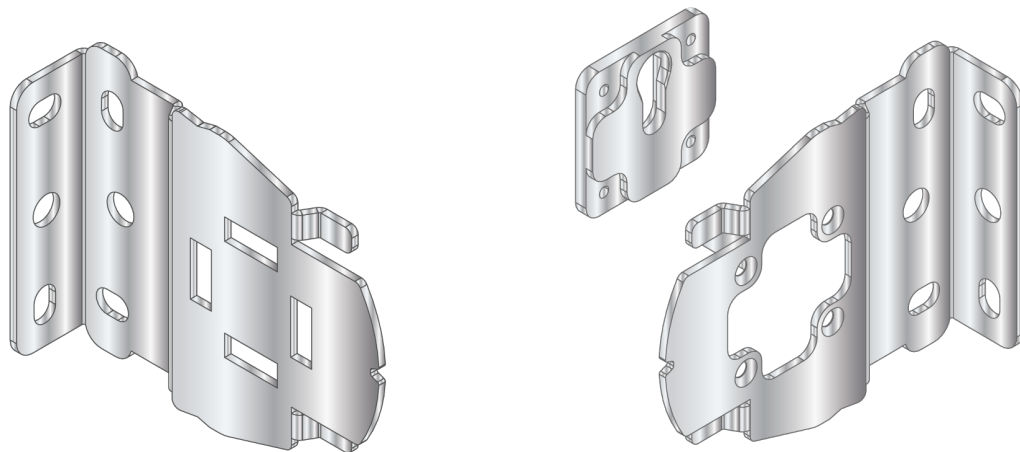
Available colors: Snow White, Almond Cream, Light Gray, Dark Gray, Espresso Brown, and Jet Black

CSS-DECOR3

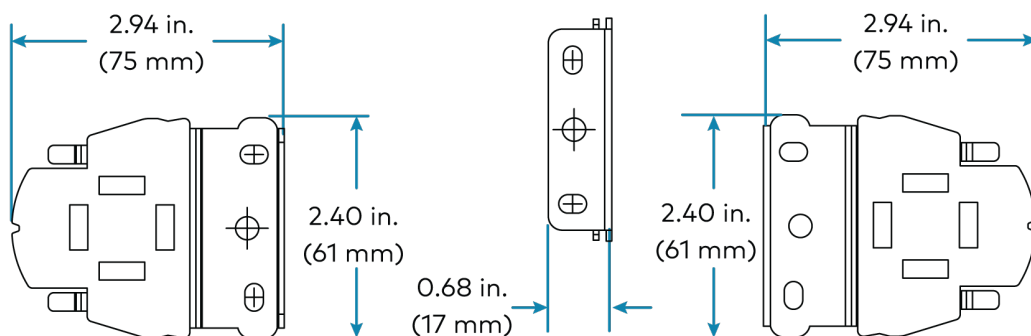
QMT3 Series Décor Shade Hardware

CSS-DECOR3 Bracket, Manual (Clutch and Idler)

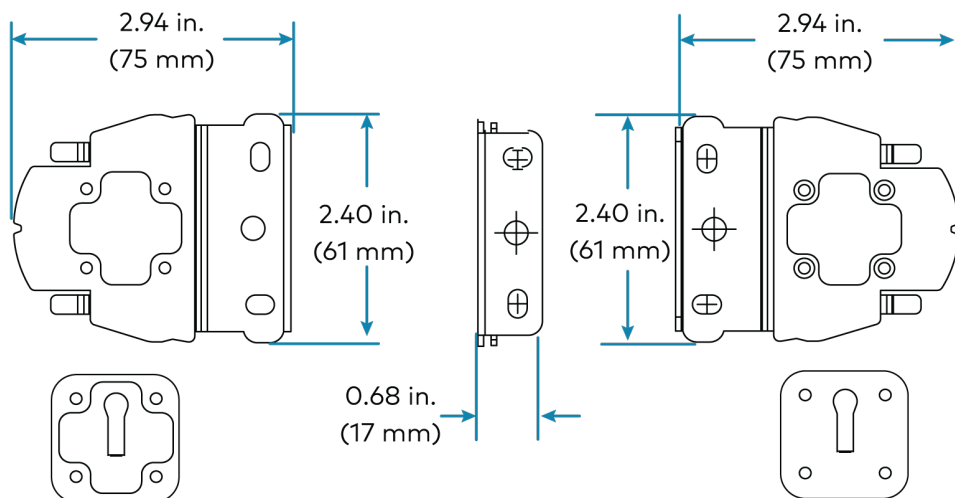
Available finish: White only



CSA-DECOR3-BRKT-MAN, Clutch Side



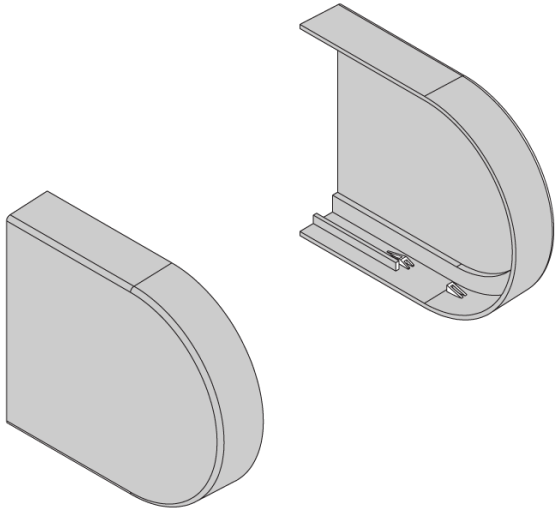
CSA-DECOR3-BRKT-MAN, Idler Side



CSS-DECOR3

QMT3 Series Décor Shade Hardware

CSS-DECOR3 End Caps, Manual



End Caps (Qty 2)

Available colors: White, Almond, Gray, Brown, and Black