



# Building Technology

Integrated by Design™



## The Crestron Difference

The only complete,  
fully integrated  
control solution.

Project teams face an extraordinary challenge to meet the industry's goals for 2030.

Crestron is dedicated to empowering design teams with the tools they need to specify truly integrated building technology.

Crestron provides facility, IT and AV managers with the integrated, IP-based tools to achieve a new standard in efficiency and reporting:

- + Total, seamless BMS integration leveraging Crestron lighting control, thermostats, shade control, audio/video distribution, digital media and control processors to provide seamless integration with other building systems.
- + Ethernet communications for web-based control and management, including email alerts, from laptops, PCs and mobile devices.
- + Enhanced user experience and control from Crestron touch panels, keypads and handhelds.
- + Advanced features such as room scheduling, room combining, load shedding, daylight harvesting, and personal workspace control.



 **CRESTRON**



# Totally Integrated Building Control

Crestron delivers complete building management for maximum energy and operational efficiency. Only Crestron can monitor, manage, and control all the technology throughout the entire facility both centrally and globally.

Crestron lighting control and energy management solutions provides total environmental control to conserve energy and lower costs by combining automated dimming and daylight harvesting with power switching and load shedding.

Crestron touch screens and interfaces offer global management of all systems and devices building-wide from a centralized command center, or local control from touch panels in each room. Monitor and control HVAC, shades, audio/video distribution and presentation systems throughout the building from the same Crestron touch panel.



Monitor space and energy usage while managing all the environmental, lighting and AV systems throughout the building.

View precise lighting levels, temperature and shade positions in every room graphically and quantitatively from any touch panel or PC. Monitor and track current and historical energy consumption, and intelligently manage resources.



## Monitoring & Management





Control every light, shade, audio/video source and display device centrally and globally on a single platform.

Ethernet connectivity enables LAN, WAN or Web-based system control and management, and sends email advisories about pre-determined events such as automatic load shedding due to high levels of energy usage.





## Managing energy consumption and realizing real cost savings must extend beyond lighting and thermostats.

Significant electrical energy waste results from lighting, AV and IT equipment left on when not in use. Crestron provides the reporting and monitoring tools to dramatically limit this waste and proactively reduce the cost of operations.

Crestron audio/video distribution systems feature sync-sensing to automatically turn off displays and projectors when no active source is detected. Even Crestron touch panels go “to sleep,” drawing less power when not in use.



Only Fusion RV (RoomView®) enterprise management software provides robust reporting and a single view of every lighting, AV and environmental device throughout a facility.



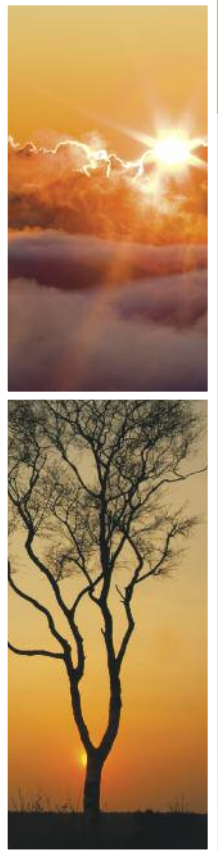
Schedule rooms using Outlook® directly from Crestron touch panels integrated with Microsoft® Exchange Server.

When a room is scheduled, thermostats can adjust, and lights and AV equipment can automatically turn "ON" prior to the start of the meeting. If the meeting is rescheduled or participants do not arrive, the room becomes "unscheduled" and set points return to power-saving mode.

## AV & Room Scheduling



# Lighting Systems Management



Crestron Fusion EM (Energy Management) provides the most energy efficient, cost effective solution by integrating separate environmental systems on a common platform, achieving a synergy that delivers optimal control and savings.

Crestron Fusion EM™ energy management software provides a rich graphical user interface which allows control and monitoring of all connected rooms. Monitor space and energy usage while managing all the environmental, lighting and AV systems throughout the building.

Utilize scheduling to adapt spaces and energy usage based on occupancy and need. Analyze energy consumption; turn lights on or off; set actions for when a room is occupied; create lighting scenes, adjust heating/cooling set points, align shades, edit demand response settings and design custom actions.



# IBT Solutions for all Markets

## Conference Center

Room partitioning and combining is simple with just a tap of a wall mount controller. Retractable walls divide conference and ballroom spaces for scheduled events such as meetings, banquets, corporate presentations and weddings. Web-based control enables managers to monitor room configurations, select preset scenes or create custom configurations directly from the banquet office.

## Office Building

Monitor, manage and control all the environmental systems throughout the facility on a single platform to maximize energy and cost savings. Integrated motion detection and occupancy sensors turn lights on in areas only when in use. Use daylight harvesting to optimize the use of natural light, while also managing room temperature, providing energy efficiency and personal comfort while meeting ASHRAE standards.

## Hotel Rooms

When a guest registers at the front desk, the proper lighting, shade, and HVAC settings are triggered directly from the property management system. Guests enjoy in-room amenities such as lighting, shade and climate control from a stylish tabletop console or directly from the television. When leaving the room, systems automatically adjust – resulting in significant energy and cost savings.

## Education

Use wall keypads and lectern touch screens to intuitively run the learning environment. Light, shade and HVAC levels adjust for how the room is used and the number of attendees. All of the rooms are centrally monitored by staff that can instantaneously provide remote assistance – improving the level of service while supporting more rooms with less staff.

## Industrial and Outdoor Environments

The processor's internal astronomical clock automatically adjusts for sunrise and sunset times on a daily basis, in addition to daylight savings. This enables cobra-head lights in the parking lot to ramp up beginning at dusk to full-on at sundown, then slowly dim beginning at sunrise.

## Stadiums and Arenas

Monitor and manage all AV resources, lighting, and environmental settings for skyboxes from one user interface. Centrally control digital signage, public address/background music systems and lighting, providing facilities managers with the tools they need to do more with less.





# Lighting Control

## Solutions for Every Market

Each lighting control system reflects the needs and desires of the occupants. There are many challenges in designing and constructing a lighting and automation system to fulfill the requirements of your clients, and Crestron offers the equipment, flexibility and design assistance you need to develop energy efficient, one-of-a kind solutions.

Selecting the proper equipment often depends on the kind of installation; new construction, major renovation, or minor retrofit. And each presents different design challenges. Available in both wired and wireless and with a wide range of options and accessories, Crestron makes it easy to provide control and comfort to any room or installation.

### Room Solutions

The variety of Crestron room solutions is limitless: from in-ceiling dimmers and switches to 6-zone wall box shade and drape control; from EMerge™ compliant dimmers to DALI® and LED ballasts and drivers with limitless programming capability. All Crestron systems can be networked together as a complete solution that suits any project to a “t”.

### Centralized Lighting Control

Crestron architectural dimming and switching products are the most advanced, scalable, energy efficient systems on the market and go beyond simple daylight harvesting and dimming. With the ability for peak load shedding, emergency override, native astronomical time lock, built-in energy monitoring, integration with BMS and other HVAC equipment, and other energy-saving features, no other company comes close to what we can offer.

### Integrated Energy Management

Harnessing the best of what energy monitoring has to offer, and combining accurate power metering data with software to manage and control, Crestron delivers complete energy management solutions. And since most Crestron lighting control solutions include a built-in power metering option, each zone of lighting has the ability to be independently measured providing the ultimate granularity in understanding how the facility is using energy.



## iLux® Integrated Lighting System



The powerfully simple and intuitive interface controls six lighting circuits, six shade groups, 16 preset scenes and master on/off, accommodates 16 Crestron keypads and shade controllers and optional motion detection. Available in black, white and almond.

## Green Light Lighting Cabinets



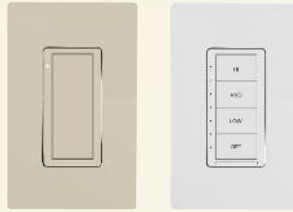
Green Light architectural dimming and power switching panels are available in a variety of sizes and configurations, including main-lug only and feed-through.

## Decorator Series Keypads



Designed to allow installation with third-party devices. The keypads use readily available standard decorative faceplates.

## Cameo® Dimmers & Switches



Now making a Cameo® appearance are Crestron® in-wall dimmers and switches, modeling the popular, modern look of Cameo keypads. Available in various button layouts and designer colors. Cresnet® and inNET EX™ technologies bring proven reliability to both wired and wireless versions.

## DALI Solutions



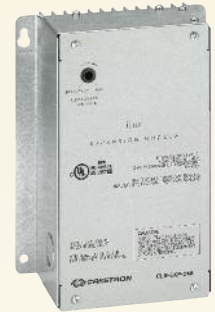
Crestron solutions for DALI are uniquely positioned to provide superior dimming and to save installation and commissioning time and money. Small DIN Rail form factor simplifies installation with other Crestron DIN Rail modules.

## Designer Series Keypads



An elegant option for any décor. Extra large backlit buttons offer room for custom engraving. Audible feedback plays door chimes, voice prompts and button clicks. Optional faceplate colors and finishes.

## Expansion Modules



iLux expansion units provides control for larger loads and additional load types.

## International Keypads



Crestron has an unmatched line of solutions for international projects as well. Engraving is available in multiple languages to insure a high ease of use.

## Cameo® Keypads



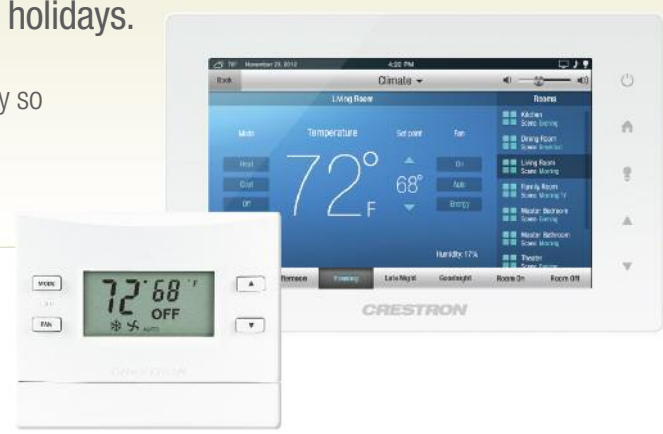
A diverse selection of 10 designer inspired colors and a dramatically reduced footprint – 75% smaller than standard decorative faceplate. Configurable button combinations.



# Mechanical Systems & Thermostats

Schedule thermostats to set back the temperature when rooms are not in use, after hours, and during weekends and holidays.

Leveraging BACnet over IP, control rooms or zones independently so the HVAC system is heating or cooling only those areas that are occupied, not the entire building.





# Shades & Drapes

Daylight harvesting uses natural light to illuminate the lobby, hallways, conference rooms and other common areas, using electrical light only when necessary for task or fill lighting.

Schedule shades and drapes to rise when a meeting is scheduled; gently lower to reduce glare when the projector is turned on.

Intelligent control manages all environmental systems to achieve maximum energy savings without compromising comfort or convenience. Balance the need for light with climate control.

Use direct sunlight in the winter to naturally warm a room; lower shades to reduce solar heat gain in the summer to keep the room comfortable using the air conditioning less frequently.



# Touch Screens

## V-Panels



Crestron® V-Panels deliver style and function with exceptional versatility. They are perfectly at home on a table or desktop, flush-mount in a wall or lectern, or custom mounted using 3rd-party VESA accessories. Long-distance, single cable connectivity affords a streamlined appearance and install. V-Panel is the world's only touch panel control solution to support today's digital HD video sources! Available in white or black.

## Wireless touch panels



9" Tilt Touch Screen



5.7" Low-Profile Wireless Touch Screen

## Wall Mount Touch Screens



HD 10.1" Touch Screen.

HD 7" Touch Screen.

HD 7" Touch Screen.

4.3" Widescreen  
Touch Screen

## Handheld Touch Screens and Remotes



Crestron Mobile Pro®  
for Apple® iPhone  
or iPod touch®



Crestron Mobile Pro® G  
for Apple® iPad™



Waterproof RF  
Wireless Remote



Isys™ Handheld  
WiFi touch panel



Isys™ Handheld  
infiNET EX™ touch panel

# Control Systems



3-Series Control System® MC3

The **NEW**



series



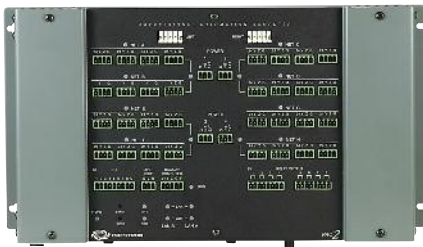
3-Series Control System® AV3



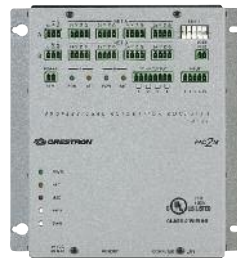
3-Series Control System® PRO3



3-Series Control System® CP3N



Professional Automation Control System



Professional Automation Mini Control System



DIN Rail 2-Series Automation Processor



MPC Media Presentation Controller™

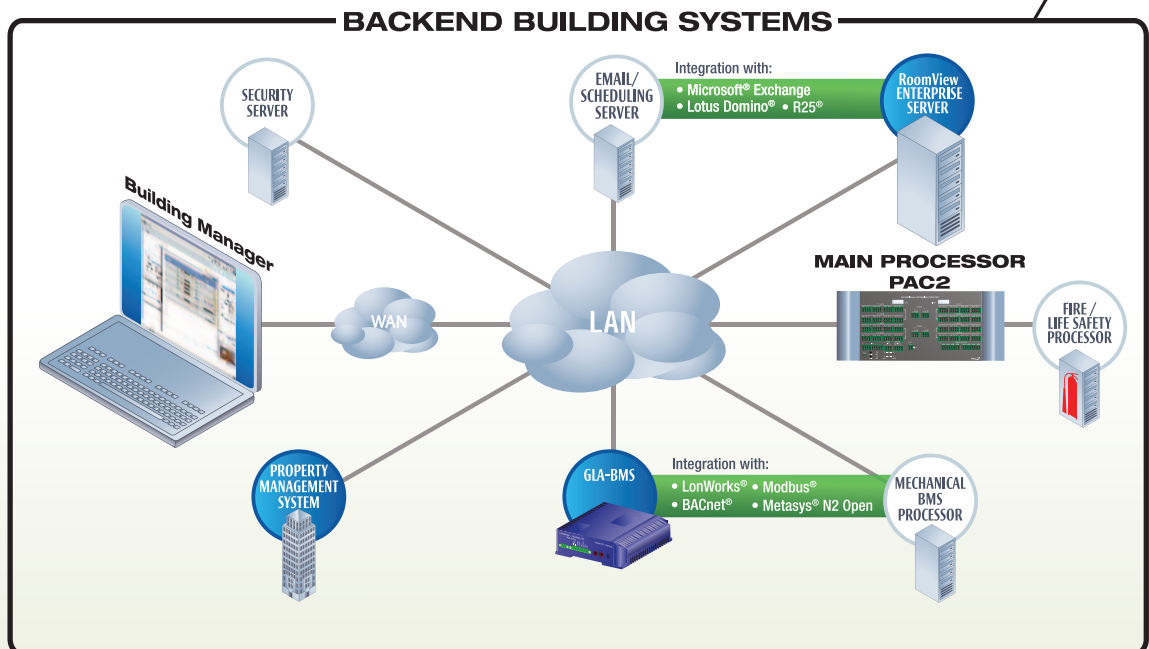
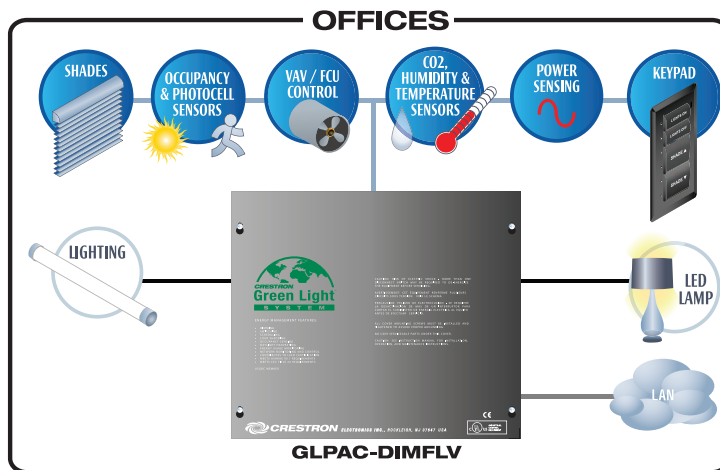
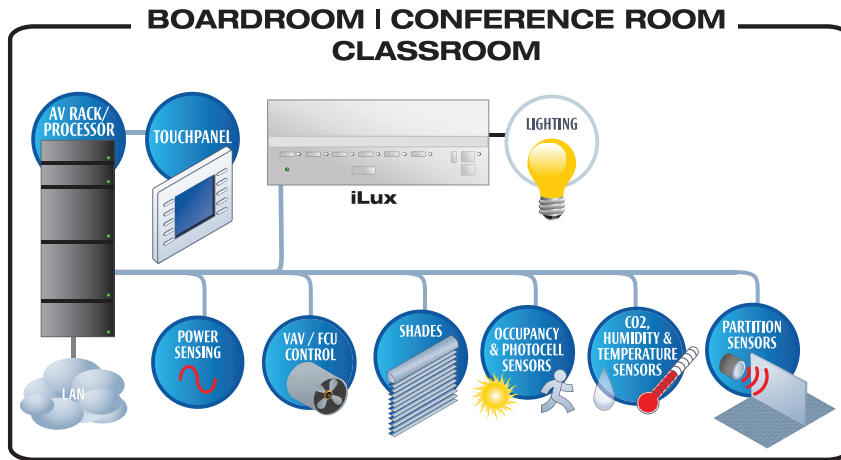


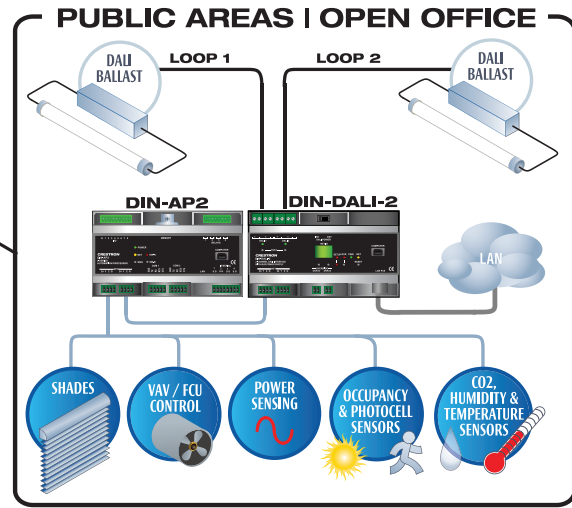
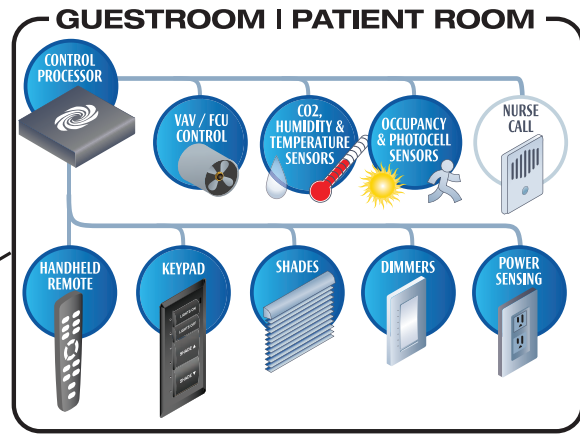
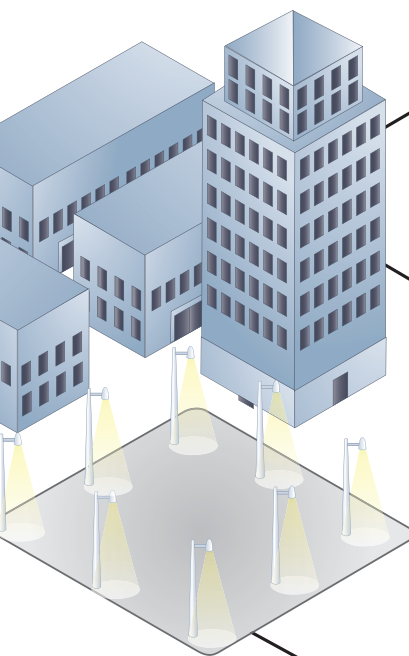
Integrated Professional Automation Computer



Green Light® Integrated Lighting System

# Integrated Building Technology Overview





**Color Key**

- Crestron Equipment
- Cresnet
- LAN
- AC Power

# Solutions for all Applications & Markets

Crestron has more than 40 years of experience providing integrated solutions that streamline technology and innovate the way people live and work. Offering the broadest line of hardware and software in the industry, Crestron is the definitive source for centrally and globally controlling, managing and presenting information on a single, integrated network.

- + Corporate
- + Education
- + Government and Military
- + Residential
- + Multi-Dwelling Units
- + Hospitality
- + Healthcare
- + Commercial Lighting
- + Cultural and Event Centers
- + Transportation
- + Houses of Worship
- + Broadcast
- + Stadiums and Arenas
- + Retail



Bates College in Lewiston, ME



The Comcast Building in Philadelphia, PA



## Crestron: the right people, the right solutions, the right partner.

Crestron has evolved well beyond the touch panel and control system. With the broadest line of hardware and software, Crestron delivers the power and simplicity of integrated solutions, tailored to suit each project. Crestron systems are flexible, reliable, secure and scalable to meet and exceed the needs of an enterprise or university multi-building platform.

With an unparalleled global infrastructure of sales, support and training, Crestron delivers proven, flexible solutions that enable project teams to achieve a higher level of integrated design. You can depend on the dedicated and talented professionals at Crestron to support a project from concept design, through life cycle management of a facility.

# State of the Art Manufacturing



Crestron delivers the most advanced and reliable products in the world. Our commitment to excellence is anchored by state-of-the-art manufacturing and research and development facilities.

The Crestron campus in New Jersey spans six expansive buildings, including an Experience Center, manufacturing and warehouse space. The cutting-edge Research Center houses hundreds of hardware and software engineers who are creating the next generation of technology.

A networked distribution center ships products at a moment's notice and the automated production plant features revolutionary robotics and prototyping machines that increase efficiency, minimize development costs and maximize quality assurance.

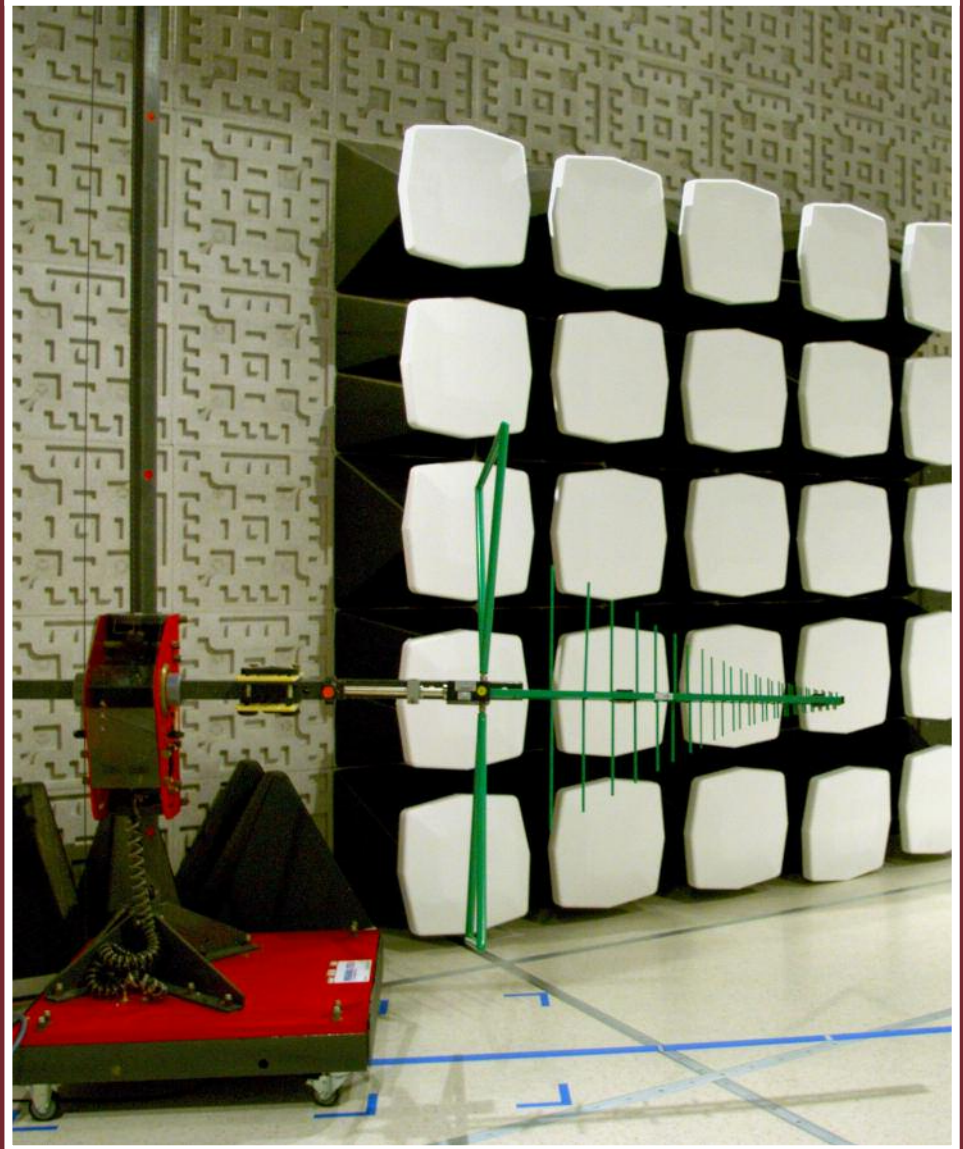
Crestron is constantly improving processes to bring the best products to market faster than any other company.

Implementing the highest quality control standards ensures that every Crestron product has undergone the most intense and extensive testing procedures. All Crestron products receive UL, CE and FCC certification for home and office use.

Crestron is also dedicated to the green initiative, providing the most energy efficient and environmentally safe systems on the planet.

As the global leader in advanced control and automation technology for commercial and residential applications, Crestron develops products and solutions that are RoHS compliant and conform to ASHRAE®, LEED® and California Title 24 standards.

The FCC Compliance Lab in the Crestron Research Center tests for RF range and interference from wireless devices. Every Crestron product is engineered to exceed FCC certification requirements.



## Compliance with Worldwide Standards



Crestron's manufacturing processes achieve the highest standards of excellence.

# Global Presence Local Support

The award-winning Crestron True Blue Support Team is an unparalleled group of dedicated professionals who are always on call. True Blue Support is a global infrastructure of more than 400 elite technicians, engineers and customer support representatives. With dozens of worldwide offices, a Crestron representative can be on site at a moment's notice.



There are state-of-the-art CTI training centers on six continents, conducting hundreds of classes each year.

Crestron offers a variety of system design and installation courses, programming certification and industry training to ensure that CTI graduates are the most knowledgeable and proficient in the world. Through a combination of classroom instruction, hands-on experience and online classes, Crestron partners are always ahead of the curve.



## Major Locations:

### Americas

Rockleigh, New Jersey World Headquarters

Washington, D.C. / Baltimore

Atlanta

Orlando

Chicago

Dallas

Denver

Los Angeles

Hollywood

San Francisco

Las Vegas

Phoenix

Mississauga, Ontario

Mexico

Brazil

### Europe, Middle East, Africa (EMEA)

England

Ireland

Scotland

Belgium

France

Spain

Germany

Italy

Saudi Arabia

United Arab Emirates

Israel

### Asia/Pacific Rim

Russia

India

China

Hong Kong

Macau

Malaysia

Singapore

Japan

South Korea

Taiwan

Australia

For more information, visit [crestron.com](http://crestron.com)

**World Headquarters**

15 Volvo Drive  
Rockleigh, NJ 07647  
800.237.2041  
201.767.3400  
[crestron.com](http://crestron.com)

**EMEA Headquarters**

Oude Keerbergsebaan 2  
B-2820  
Rijmenam  
Belgium  
+32.15.50.99.50  
[crestron.eu](http://crestron.eu)

**Asia Headquarters**

Room 2501, 15/F, Westin Centre  
No. 26 Hung To Road  
Kwun Tong, Kowloon  
Hong Kong  
+852.2341.2016  
Video Ph: +852.2373.7530  
[crestronasia.com](http://crestronasia.com)

**Japan Headquarters**

1736-3 Higashitsuda-Cho  
Matsue City 690-0011  
Japan  
+81.852.60.5185  
[crestron.jp](http://crestron.jp)

**Latin America Headquarters**

Bldv. Manuel Avila Camacho No 37-1A  
Col. Lomas de Chapultepec  
CP 11560 México DF  
+52.55.5093.2160  
[crestron.com.mx](http://crestron.com.mx)

**Australia Headquarters**

1 Clyde Street  
Silverwater NSW 2128  
Australia  
612.9737.8203  
[crestron.com.au](http://crestron.com.au)



Products manufactured in the United States. Printed in USA D4644B\_2013\_03

All brand names, product names, and trademarks are the property of their respective owners. Certain trademarks, registered trademarks, and trade names may be used in this document to refer to either the entities claiming the marks and names or their products. Creston disclaims any proprietary interest in the marks and names of others. Creston is not responsible for errors in typography or photography. ©2013 Creston Electronics, Inc.

