

# ZUMMESH-KP10AMBATT

AirMedia® Wireless Keypad for AM-200 & AM-300, Battery-Powered  
Installation Guide



## Description

The Crestron® ZUMMESH-KP10AMBATT provides power and volume control to a display that is connected to an AM-200 or AM-300 AirMedia® Presentation System. Simply connect the ZUMMESH-KP10AMBATT to a ZUMMESH-AVBRIDGE\* that is part of an AM-200\* or AM-300\* AirMedia Presentation System to begin controlling the display.

\* Not included.

## Installation

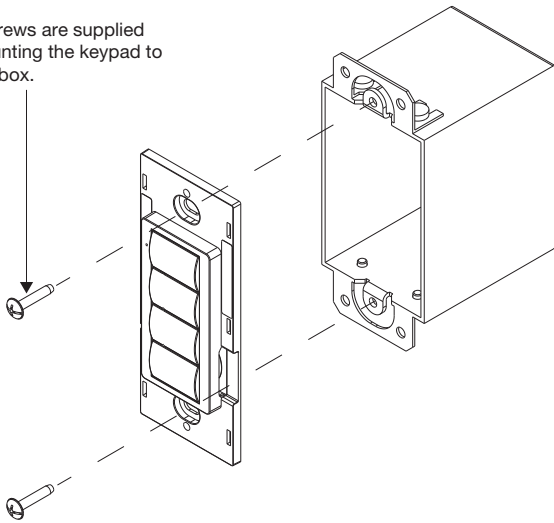
**NOTE:** Observe the following points.

- Install in accordance with all local and national electrical codes.
- For use where temperatures are between 32° to 104 °F (0° to 40 °C).
- Several devices can be installed in one electrical box (multigang). For a smooth appearance, install a one-piece multigang faceplate (not included).

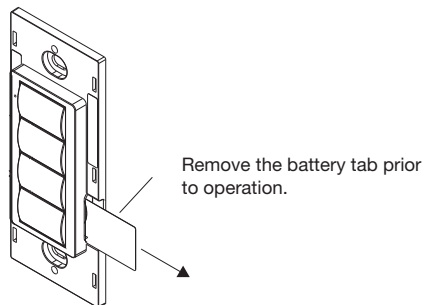
### Mount in a Single-Gang Box

1. Secure the ZUMMESH-KP10AMBATT to a single-gang box using the two supplied screws.

Two screws are supplied for mounting the keypad to a back box.



2. Remove the battery tab to turn on the keypad.



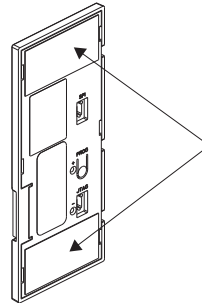
Remove the battery tab prior to operation.

3. Attach a decorator-style faceplate (not included).

### Mount on a Flat Surface

Secure the ZUMMESH-KP10AMBATT to a clean, flat surface using the supplied double-sided tape.

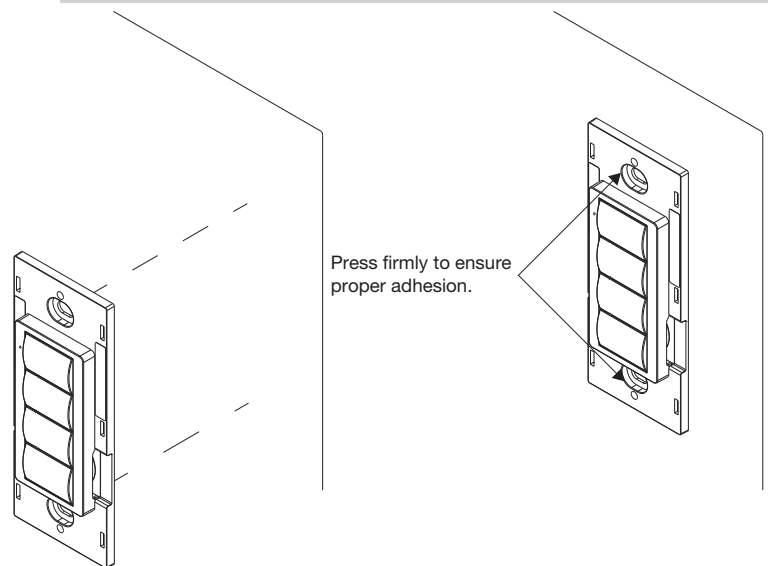
1. Clean the mounting surface with a light cleaning agent that does not leave a residue.
2. Remove the backing of one piece of double-sided tape, and apply it to the back of the keypad. Repeat for the other piece of double-sided tape.



Two pieces of tape are supplied to mount the keypad without a backbox.

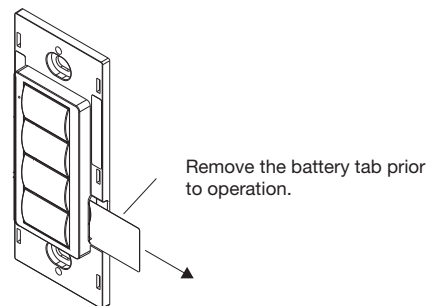
3. Ensure that the keypad is vertical and press it firmly against the wall to ensure it is properly secured.

**CAUTION:** Removing the keypad after installation may damage the mounting surface.



Press firmly to ensure proper adhesion.

4. Remove the battery tab to turn on the keypad.



Remove the battery tab prior to operation.

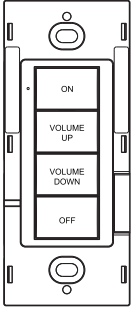
5. Attach a decorator-style faceplate (not included).

## Set up the ZUMMESH-KP10AMBATT

To set up the ZUMMESH-KP10AMBATT, refer to the AM-200/AM-300 Product Manual (Doc. 8254) at [www.crestron.com/manuals](http://www.crestron.com/manuals).

## Control the Display

The ZUMMESH-KP10AMBATT has ON, VOLUME UP, VOLUME DOWN, and OFF buttons that control the display.



**ON:** Turns the display on.

**VOLUME UP:** Raises the volume.

**VOLUME DOWN:** Lowers the volume.

**OFF:** Turns the display off.

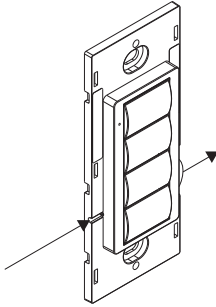
## Replace the Battery

**WARNING:** Refer to the following warnings before changing the batteries.

- Do not ingest batteries. Ingesting a battery poses a chemical burn hazard.
- This product contains a coin cell battery. If a coin cell battery is swallowed, it can cause severe internal burns in just 2 hours and can lead to death.
- Keep new and used batteries away from children. If the battery compartment does not close securely, stop using the product and keep it away from children.
- If you think batteries have been swallowed or placed inside any part of the body, seek immediate medical attention.

**CAUTION:** The battery used in this device may present a risk of fire or chemical burn if mistreated. Do not recharge, disassemble, heat above 212 °F (100 °C), or incinerate. Replace batteries with an identical CR2032 only. Use of another battery may present a risk of fire or explosion.

To remove the battery, insert a pin or paper clip into the slot on the left side of the keypad. The battery slides out of the opposite side of the keypad.

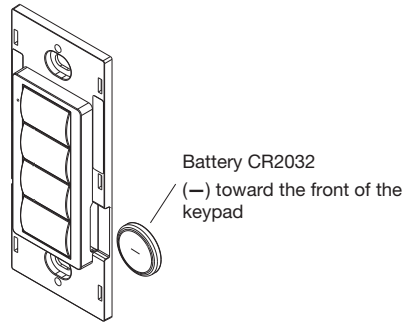


To remove the battery, insert a pin or paper clip into the hole on the side.

**NOTE:** The battery must be inserted properly.

**NOTE:** The keypad will not operate if the battery is inserted incorrectly.

To install a new battery, insert the battery into the battery slot. The — terminal faces away from the wall.



## Additional Resources

Visit the product page on the Crestron website ([www.crestron.com](http://www.crestron.com)) for additional information and the latest firmware updates. Use a QR reader application on your mobile device to scan the QR image.



This product is Listed to applicable UL® Standards and requirements tested by Underwriters Laboratories Inc.

Ce produit est homologué selon les normes et les exigences UL applicables par Underwriters Laboratories Inc.



### Federal Communications Commission (FCC) Compliance Statement

This device complies with part 15 of the FCC Rules. Operation is subject to the following two conditions: (1) This device may not cause harmful interference, and (2) this device must accept any interference received, including interference that may cause undesired operation.

**CAUTION:** Changes or modifications not expressly approved by the manufacturer responsible for compliance could void the user's authority to operate the equipment.

**NOTE:** This equipment has been tested and found to comply with the limits for a Class A digital device, pursuant to part 15 of the FCC Rules. These limits are designed to provide reasonable protection against harmful interference when the equipment is operated in a commercial environment. This equipment generates, uses, and can radiate radio frequency energy and, if not installed and used in accordance with the instruction manual, may cause harmful interference to radio communications. Operation of this equipment in a residential area is likely to cause harmful interference in which case the user will be required to correct the interference at his own expense.

### Industry Canada (IC) Compliance Statement

CAN ICES-3(A)/NMB-3(A)

The product warranty can be found at [www.crestron.com/warranty](http://www.crestron.com/warranty).

The specific patents that cover Crestron products are listed at [www.crestron.com/legal/patents](http://www.crestron.com/legal/patents).

Certain Crestron products contain open source software. For specific information, please visit [www.crestron.com/opensource](http://www.crestron.com/opensource).

Crestron, the Crestron logo, and AirMedia are either trademarks or registered trademarks of Crestron Electronics, Inc. in the United States and/or other countries. UL and the UL logo are either trademarks or registered trademarks of Underwriters Laboratories, Inc. in the United States and/or other countries. Other trademarks, registered trademarks, and trade names may be used in this document to refer to either the entities claiming the marks and names or their products. Crestron disclaims any proprietary interest in the marks and names of others. Crestron is not responsible for errors in typography or photography.

This document was written by the Technical Publications department at Crestron.

©2018 Crestron Electronics, Inc.

Crestron Electronics, Inc.  
15 Volvo Drive, Rockleigh, NJ 07647  
Tel: 888.CRESTRON  
Fax: 201.767.7576  
[www.crestron.com](http://www.crestron.com)

Installation Guide - DOC. 8332A  
(2052106)  
06.18

Specifications subject to change without notice.