



we make
it **easy**

CEDIA 2011

Featured Products

booth **1103 / SR1**



INTEGRATED HOME TECHNOLOGY

Specifications subject to change without notice. Crestron is not responsible for errors in typography or photography.

3-Series, 3-Series Control System, Adagio, ADMS, Ascent, Cameo, Core 3, Core 3 OS, Core 3 UI, CresFiber, Cresnet, Crestron, Crestron Control, Crestron Green Light, Crestron Home, Crestron IHT Integrated Home Technology, Crestron iServer, Crestron Mobile, Crestron Mobile Pro, D3 Pro, DigitalMedia, DigitalMedia 8G, DigitalMedia 8G+, DM, DM 8G, DM 8G+, e-Control, Excite, Fusion, Fusion EM, iLux, infinET EX, Instant-Waking, Intermedia Delivery, Intermedia Delivery System, Isys, PROCISE, QuickMedia, QuickSwitch HD, Sonnex, Sonnex Speaker Protect, SystemBuilder, V-Panel, V-Panels, VT Pro-e, WorldSearch, and the Crestron logo are either trademarks or registered trademarks of Crestron Electronics, Inc. in the United States and/or other countries.

Adobe and Flash are either trademarks or registered trademarks of Adobe Systems Incorporated in the United States and/or other countries. Apple, iPad, iPhone, iPod, and iPod touch are either trademarks or registered trademarks of Apple Inc. in the United States and/or other countries. BACnet is either a trademark or registered trademark of American Society of Heating, Refrigerating and Air-Conditioning Engineers, Inc. in the United States and/or other countries. Audyssey MultEQ, Audyssey Dynamic EQ, and Audyssey Dynamic Volume are either trademarks or registered trademarks of Audyssey Laboratories, Inc. in the United States and/or other countries. Blu-ray Disc is either a trademark or registered trademark of the Blu-ray Disc Association in the United States and/or other countries. CEDIA is either a trademark or registered trademark of Custom Electronic Design & Installation Association in the United States and/or other countries. Dolby and the double-D symbol are either trademarks or registered trademarks of Dolby Laboratories in the United States and/or other countries. DTS-HD, DTS-HD Master Audio, and the DTS logos and Symbol are either trademarks or registered trademarks of DTS, Inc. in the United States and/or other countries. LonWorks is either a trademark or registered trademark of Echelon Corporation in the United States and/or other countries. Facebook is either a trademark or registered trademark of Facebook, Inc. in the United States and/or other countries. Android and YouTube are either trademarks or registered trademarks of Google Inc. in the United States and/or other countries. HDMI and the HDMI Logo are either trademarks or registered trademarks of HDMI Licensing LLC in the United States and/or other countries. Hulu is either a trademark or registered trademark of Hulu, LLC in the United States and/or other countries. PerfectLock is either a trademark or registered trademark of John Mezzalingua Associates, Inc. in the United States and/or other countries.



Metasys is either a trademark or registered trademark of Johnson Controls, Inc. in the United States and/or other countries. Silverlight and Windows are either trademarks or registered trademarks of Microsoft Corporation in the United States and/or other countries. Netflix is either a trademark or registered trademark of Netflix, Inc. in the United States and/or other countries. Pandora and the Pandora logo are either trademarks or registered trademarks of Pandora Media, Inc. in the United States and/or other countries. Modbus is either a trademark or registered trademark of Schneider Automation Inc. in the United States and/or other countries. SiriusXM, XM and all related marks and logos are either trademarks or registered trademarks of Sirius XM Radio Inc. and its subsidiaries in the United States and/or other countries. Somfy is either a trademark or registered trademark of Somfy Systems, Inc. in the United States and/or other countries.

Other trademarks and trade names may be used in this document to refer to either the entities claiming the marks and names or their products.

Crestron disclaims any proprietary interest in the marks and names of others.

©2011 Crestron Electronics, Inc.

Table of Contents

■ Integrated Home Technology	5
■ Mobility	6
■ HD Digital Media Distribution	8
■ Multiroom Audio	20
■ Control Systems	24
■ Touch Screens	28
■ Handheld Remotes	35
■ Keypads and In-Wall Lighting	39
■ Centralized Lighting	48
■ Energy Management	50
■ Climate Control	53
■ Media Servers and Radio Tuners	55
■ High-End Home Theater	59
■ Commercial AV Products	61
■ Interface Cables and Wall Plates	65

Control Everything All the Time from Anywhere

There's no question Crestron is the #1 premier home control brand in the world. What you may not know is that it's also the most affordable. With Crestron, there's no compromise. You don't have to give up power, performance or scalability for price. Only Crestron allows you to start with a really small and inexpensive system, and then grow as big as you want at your pace. You'll never hit a dead end or have to start over.

System installation and programming is faster and easier than ever before. Upgrade from analog to digital using existing CAT5e wire with Crestron DigitalMedia 8G+™. Our new CORE 3 UI™ cuts programming time in half, and delivers the ultimate “wow” touch screen experience with Flash®. Crestron also provides control for the whole family whether home or away from any smart device, including iPhone®, iPad® and Android™.

Crestron even saves money with our powerful Fusion™ Energy Management software. And as always, we guarantee the highest performance in the world, and back you up with the best support in the industry.

At Crestron, we don't make you choose, we make it easy.

Crestron Control® App



Crestron Mobile Pro® makes the dream of controlling anything in your home from anywhere in the world a reality. Remotely turning on lights, adjusting air conditioning, checking the security system and viewing security cameras is all possible

through one powerful control app. **Now supporting both Android™ and Apple® iOS based mobile devices**, Crestron Mobile Pro puts whole home control at your fingertips — from more places — through more devices — than any other solution available.



Crestron Mobile Pro is **the industry's most full-featured mobile control app**, providing an intuitive user interface that's fully scalable and customizable for use on an expanding range of touch screen based smart phones, personal media players, and tablet devices. Through your Wi-Fi or 3G/4G mobile network connection, Mobile Pro provides **the convenience of wireless control from anywhere in the house or out-and-about** using the one device that goes with you everywhere.

Crestron Mobile Pro® Control App for Mobile Devices

- + Enables mobile control using iPad®, iPhone®, iPod touch®, and all Android™ devices
- + One project works across multiple platforms and resizes automatically to fit any screen
- + Provides an extensively customizable user interface
- + Affords full system control with real-time status feedback and metadata
- + Supports automatic screen rotation and swipe gestures
- + Includes a large library of built-in graphics
- + Full integration with Crestron programming software
- + Allows control of multiple systems from one device
- + Communicates directly with a Crestron control system via Wi-Fi or mobile data network
- + No special server or 3rd-party service required!

Docking Stations for iPad®

Slide your iPad or iPad 2 running the Crestron Mobile Pro® Control App into one of these stylish docks to instantly transform it into a stationary Crestron® touch screen.



IDOC-PAD-DSC

IDOC-PAD-DSWC



IDOC-PAD-DSC & IDOC-PAD-DSWC Docking Stations for iPad®

- + Stylish tabletop and in-wall docks for Apple® iPad and iPad 2
- + Turns the iPad into a stationary Crestron touch screen
- + Designed for seamless integration with Crestron Mobile Pro
- + Allows full use of the iPad while charging
- + Allows easy docking and undocking
- + Available in gloss white or black finishes

HD Digital Media Distribution

DigitalMedia 8G+™

CRESTRON DIGITALMEDIA

DM8G+

For over three years, DigitalMedia™ has been the only practical multi-

room AV distribution and control solution available to handle uncompressed HD digital and analog signals — all over one cable. Now, DigitalMedia 8G+ advances the art of digital AV system design to deliver the easiest solution yet using ordinary CAT5e wire!

Before DigitalMedia, Crestron pioneered whole-house AV distribution over CAT5e with our hugely successful PVID systems. As digital takes over, DM 8G+™ makes it easy to upgrade PVID systems without replacing any wiring. Just swap out the hardware and update the program to attain lossless HD signal distribution of both digital and analog sources along with Ethernet and Crestron Control® signals to every room in the house.

Our unmatched experience and knowhow have made DigitalMedia the one multiroom AV solution that's proven to provide a truly simple, seamless transition from analog to digital. We're so confident, we're offering up to 100% trade in value when you upgrade any existing analog system to DigitalMedia.

Crestron Analog-to-Digital Upgrade Program!

Contact Crestron Sales Support Services to learn how to receive up to 100% trade in credit toward qualifying equipment upgrades!



Easy, Affordable HD Over one CAT5e

DigitalMedia™ isn't just for large, expensive homes. Our new DigitalMedia Distribution Centers provide a high-performance solution for any house, condominium, or sports bar. Featuring DigitalMedia 8G+™ technology, these simple-to-install switchers deliver **ultra-reliable, ultra high-bandwidth signal routing over inexpensive CAT5e wiring.**



DM-MD6X6

DM-MD 6X4 & 6X6 DigitalMedia™ Distribution Centers

- + Low-cost, high-performance multiroom HD AV signal routing
- + True one-wire solution using DigitalMedia 8G+ technology
- + Distributes uncompressed digital AV over CAT5e
- + Provides DM 8G+™ outputs for 3 or 5 remote displays
- + Allows up to 330 ft wire distance to each display
- + Single HDMI® output provided for a local display or audio processor
- + Six HDMI inputs for HDMI, DVI, or DisplayPort Multimode sources
- + Handles HD 1080p60 and UXGA/WUXGA resolutions
- + Handles 3D, Deep Color, and high-bitrate 7.1 encoded audio
- + QuickSwitch HD® technology manages HDCP keys behind the scene for reliable, low-latency switching
- + Performs automatic AV signal format management via EDID
- + Enables USB HID mouse and keyboard signal extension
- + Includes integrated Ethernet switch
- + Provides Power over DM® for PoDM-compatible receivers
- + Provides easy setup and diagnostics tools via front panel or software
- + Includes built-in universal power supply
- + Native Crestron system integration via Ethernet
- + Standard component width or 2-space rack-mountable

HD Digital Media Distribution

A Scaler for Every Display

New DM 8G+™ receivers put a **high-performance HD scaler at every display**, ensuring an optimal image on every screen, and seamless distribution of any source to multiple displays regardless of resolution, format, or 3D capability.



DM-RMC-SCALER-C

DM-RMC-SCALER-C DigitalMedia 8G+™ Receiver & Room Controller w/Scaler

- + DM 8G+ input allows wire runs up to 330 ft over CAT5e
- + HDMI® output supports up to HD 1080p and WUXGA displays
- + Built-in high-definition scaler
- + Intelligent frame rate conversion
- + Motion-adaptive de-interlacing or interlacing
- + Adjustable overscan or underscan up to 7.5%
- + Automatic 3D to 2D signal conversion
- + Content-adaptive noise reduction
- + 100% HDCP compliant
- + Up to 4x4 video wall capability
- + CEC, RS-232, IR, and Ethernet device control
- + Ethernet and USB HID mouse/keyboard ports
- + Low-profile 2-gang surface mount

DM-RMC-200-C DigitalMedia 8G+™ Receiver & Room Controller 200

All the features of the DM-RMC-SCALER-C plus:

- + Stereo analog audio output
- + Built-in 30 Watt stereo amplifier
- + Relay and digital input control ports
- + Provides Power over DM® for compatible transmitters

Crestron offers a full range of DM receivers and transmitters to support any application, with the option to run DM over copper wire or optical fiber.

Perfect Interfaces for Portable Devices

New DM 8G+™ transmitters let you connect portable laptops, mobile devices, and other AV sources, and view them on any display in the house.

DM-TX-200-C-2G



DM-TX-201-C

DM-TX-200-C-2G-WALL Wall Plate DigitalMedia 8G+™ Transmitter 200

- + Simple 2-gang wall plate interface for portable devices
- + DM 8G+ output enables wire runs up to 330 ft over CAT5e
- + PoDM (Power of DM®) affords a true one-wire installation
- + Provides HDMI® and RGB/component inputs
- + Supports HD 1080p and UXGA/WUXGA resolutions
- + Supports 7.1 surround sound audio via HDMI
- + Includes stereo analog audio input
- + Built-in QuickSwitch HD® 2x1 AV switcher
- + USB HID keyboard/mouse port

DM-TX-201-C DigitalMedia 8G+™ Transmitter 201

- + Low-profile surface-mount design
- + DM 8G+ output with PoDM
- + HDMI and RGB/component inputs
- + Stereo analog audio input
- + Built-in QuickSwitch HD 2x1 AV switcher
- + Local HDMI monitor output
- + USB HID port for host computer
- + 10/100 Ethernet port

HD Digital Media Distribution

Modular, Scalable DM[®] Matrix Routing

DigitalMedia™ Switchers let you **hide all your HDTV receivers, Blu-ray changers, and media servers** away in a central equipment closet while enabling you to **enjoy any source from any room in the house** in full HD and 7.1 surround sound. Fully scalable and modular, these DM switchers can accommodate any combination of digital and analog sources, with the ability to change and grow with your needs over time.



DM-MD 8X8, 16X16, & 32X32

DigitalMedia™ Switchers

- + Provides lossless HD AV signal routing over CAT5e or fiber
- + Affords full matrix switching scalable from 8x8 to 32x160
- + DM 8G+™ in/out supports 330 ft over CAT5e
- + DM 8G[®] Fiber in/out supports 1000 ft over multimode fiber
- + **NEW!** DM 8G SM supports up to 7.5 miles (12 km) over single-mode fiber!
- + Modular input cards available for HDMI[®], Displayport Multi-mode, DVI, 3G-SDI, RGB, SPDIF, analog video/audio, & DM
- + Output cards available for HDMI, analog audio, and all types of DM
- + QuickSwitch HD[®] switching and HDCP key management
- + Automatic AV signal format management
- + Full HD 1080p60 and UXGA/WUXGA
- + 3D, Deep Color, and high-bitrate 7.1 encoded audio
- + Simultaneous output of stereo and surround sound audio
- + USB HID mouse and keyboard signal distribution
- + Integrated Ethernet switch with Gigabit LAN port

Large-Scale, Mission-Critical DM[®] Switching

For massive projects demanding ultimate reliability, the new DM-MD64X64 is configurable using 8-channel I/O blades and redundant power supplies. Everything from the I/O blades to the CPU, power supplies, and cooling fans can be replaced on the spot, minimizing or eliminating down-time in the unlikely event of a component failure.



DM-MD64X64 DigitalMedia™ Switcher

- + Modular design configurable in blades of 8 inputs or outputs
- + Full matrix switching scalable from 8x8 to 64x64
- + DM 8G+™, DM 8G® Fiber, DM 8G SM Fiber, and HDMI® I/O blades available
- + Front panel 15" color touch screen for switcher setup and control
- + Front panel video preview and audio monitoring
- + QuickSwitch HD® technology manages HDCP keys for reliable, low-latency switching
- + USB HID signal routing with breakaway
- + Integrated Ethernet switch with dual Gigabit LAN ports
- + Easy setup and diagnostics tools via front panel or software
- + Onboard hot-swappable redundant power supplies
- + Hot-swappable I/O blades and fan tray
- + Cold-swappable CPU
- + Fault monitoring and notification via front panel and network
- + Built-in video test patterns and audio test-tones
- + 14U 19-inch rack-mountable

HD Digital Media Distribution

Universal HD Multimedia Interface and Signal Converter

It's incredible the things you can do when you take any of our DigitalMedia™ Switcher Input Cards and put it in a compact, rack-mountable enclosure. **Convert virtually any digital or analog source to HDMI®.** Extract or merge analog and digital signals. Create a rack-mountable DM Receiver. The possibilities are numerous.



DMCI DigitalMedia™ Card Interface

- + Allows use of a single DMC Input Card for a variety of interface functions
- + Convert analog AV to HDMI®
- + Merge DVI with analog audio to HDMI
- + Convert SDI to HDMI
- + Extract analog audio from HDMI or SDI
- + Down-mix multi-channel HDMI audio to stereo
- + Extract or generate EDID
- + Provide a Cresnet®-to-CEC control gateway
- + Extend USB HID mouse/keyboard over Ethernet
- + Create a rack-mountable DM receiver

Universal Scaler

The HD-SCALER makes it easy to add a high-performance video scaler to any HDMI® or DVI display to accommodate a variety of sources and ensure compatibility with a wide range of input resolutions.



HD-SCALER High-Definition Video Scaler

- + Compact, low-profile surface mount design
- + Automatically scales any input signal to match any display
- + Supports resolutions up to HD 1080p and UXGA/WUXGA
- + Performs deinterlacing of NTSC, PAL, and 1080i sources
- + Handles HDMI signals with HDCP
- + Supports analog video and computer sources
- + Allows advanced management of EDID
- + Allows adjustable overscan and underscan up to 7.5%
- + Auto-switches between digital and analog sources
- + Handles 7.1 digital audio and analog stereo audio
- + Allows embedding of analog audio to HDMI
- + Setup via on-screen display using IR wireless remote
- + Built-in test patterns
- + Cresnet® control system integration
- + Provides a powerful portable diagnostic tool for any video setup

HD Digital Media Distribution

HDMI® over Fiber Extenders

Crestron HDMI over Fiber technology affords reliable, high-performance digital AV signal extension over long distances, handling high-definition digital video and audio, analog audio, Ethernet, HID, and control signals all over one fiber strand.



HD-TX1-F



HD-RX1-F

HD-TX1-F & HD-RX1-F HDMI® over Fiber Transmitter and Receiver

- + Extends uncompressed digital AV and control signals 1000 ft over simplex multimode fiber
- + Supports HDMI with Deep Color, DVI, and DisplayPort Multimode
- + Supports 7.1 channel lossless audio up to 48 kHz
- + Handles resolutions up to 1920x1200 and 1080p60
- + Passes CEC, EDID and HDCP
- + Includes universal IR repeater
- + Extends bidirectional RS-232
- + Provides electrical isolation for outdoor runs
- + Affords a hidden wiring solution using CresFiber® CLEAR Fiber Optic Cable



HD-TX3-F



HD-RX3-F

HD-TX3-F & HD-RX3-F HDMI® over Fiber Transmitter and Receiver

All the features of the HD-TX1-F and HD-RX1-F plus:

- + Adds Ethernet, USB HID, and analog audio signal extension

HDMI® over Twisted Pair Extenders

When you just need to get an HDMI signal from one end of the building to the other, Crestron HDMI over Twisted Pair Extenders provide a **professional-grade solution that's incredibly simple and ultra-reliable.**



HD-EXT1-C HDMI® over Shielded Twisted Pair Extender

- + Extends uncompressed digital AV and control signals 330 ft
- + Works reliably without any programming or configuration
- + Supports HDMI with Deep Color and 3D
- + Supports 7.1 channel HD lossless audio
- + Compatible with DVI and DisplayPort
- + Handles resolutions up to 1920x1200 and 1080p60
- + Passes CEC, EDID and HDCP
- + Includes universal IR repeater
- + Extends bidirectional RS-232



HD-EXT2-C HDMI® over Shielded Twisted Pair Extender

All the features of the HD-EXT1-C plus:

- + Adds stereo analog audio extension via a second cable

HDMI® Problem Solver

Need to feed two displays from one HDMI source? Or, split an HDMI signal between a display and a surround sound processor? Need to break out the HDMI audio signal and convert it to SPDIF or analog? Or, merge separate digital audio and video sources into one HDMI stream? Not a problem...just use the HD-DA-2.



HD-DA-2 1-to-2 HDMI® Distribution Amplifier & Audio Converter

- + One in, two out HDMI signal splitter
- + Extracts analog and SPDIF audio from HDMI
- + Embeds SPDIF audio onto HDMI
- + Merges DVI and SPDIF into one HDMI signal
- + Supports HD 1080p w/Deep Color and 7.1 HD lossless audio
- + Allows configuration of audio EDID and HDCP key handling
- + No programming or control system required

HDMI® Switching You Can Rely On

Crestron QuickSwitch HD® switchers deliver **trouble-free, low-latency switching** with numerous advanced features for routing and managing multiple digital multimedia signals.



HD-MD8X1 & HD-MD8X2 QuickSwitch HD® HDMI® Switchers

- + Low-latency QuickSwitch HD switching technology
- + Support HDMI w/Deep Color, 3D, and high-bitrate 7.1 audio
- + Compatible with DVI and DisplayPort Multimode
- + Support video resolutions up to HD 1080p60 and UXGA/WUXGA
- + Detect and report detailed video and audio input information
- + Manage HDCP digital rights management for connected devices
- + Perform automatic AV signal format management via EDID
- + Include front panel controls with security lockout
- + Allow audio breakaway switching
- + Simple setup and diagnostics via software
- + Native control system integration via Ethernet or Cresnet®
- + Simple input expansion for DigitalMedia™ systems
- + Single-space 19-inch rack-mountable

Multiroom Audio

SONNEX
CRESTRON DIGITAL AUDIO TRANSPORT

Sonnex is simply **the best sounding, most powerful audio distribution solution on the market**. Featuring high output power, high efficiency, advanced DSP, flexible configuration, and integrator-friendly setup, Sonnex is ideal for homes, restaurants, and other multi-zone applications of any size. **Sonnex is engineered to integrate perfectly with DigitalMedia™** to form a total media distribution solution with minimal wiring — and minimal headaches.



Sonnex is fully scalable using expansion units that can be placed centrally or remotely, with **simple hookup using a single shielded CAT5e or fiber optic cable**. Start with the SWAMP-24X8 at your head end, and add up to eight SWAMPE expanders for an astounding 74 stereo zones of robust, audiophile sound quality. A generous 24 inputs are provided at the head end to handle analog and digital sources.

SWAMP-24X8 Sonnex™ Multiroom Audio System

- + Advanced multi-zone audio distribution
- + Robust, high-efficiency audiophile grade amplification
- + 140 Watts/Ch. @ 8 Ohms, 400 Watts/Ch. Bridged
- + Eight amplified stereo zone outputs
- + Two additional SPDIF stereo zone outputs
- + Output Bussing—Link multiple adjacent zones
- + Bridgeable outputs—Extra power for large or noisy areas
- + Sonnex Link—One-wire interface to 8 expanders up to 200 feet away
- + Balanced, unbalanced, and SPDIF inputs
- + Direct connection to Crestron Interface for iPod®
- + Volume, bass, treble, loudness, and selectable “tone profiles”
- + 5-band graphic or parametric EQ per zone
- + Dynamic Range Control—Maintains even listening levels
- + Speaker Profiles—Preset speaker settings for fast, easy commissioning

- + Sonnex Speaker Protect™—Extends headroom while preventing damage
- + Energy-saving individual zone power control and global standby
- + Streamlined setup and adjustment
- + Remote fault monitoring
- + Seamless Crestron system integration
- + Heavy duty detachable terminal blocks
- + Low power consumption, cool-running operation
- + Compact 4-space 19" rack-mountable



SWAMPE-4 & SWAMPE-8 Sonnex™ Multiroom Audio Expanders

- + Adds four or eight amplified stereo zone outputs
- + Provides same performance and room functionality as the SWAMP-24X8
- + Connects to SWAMP-24X8 via a single shielded CAT5e

Sonnex™ Link over Fiber

Easily extend the Sonnex Link over one multimode fiber strand. Provides optical isolation against lightning surges when running the Sonnex Link between a main house and guest house, pool house, or other outbuilding.



S-EXT1-S Sonnex™ Link over Fiber Extender

- + Extends the Sonnex Link up to 1000 ft over fiber
- + Works reliably without any programming or configuration
- + Transports 24 stereo channels of digital audio
- + Also carries Sonnex control signals
- + Protects against lightning surges for outdoor runs

Multiroom Audio

Budget-Conscious Multiroom Audio

At an incredibly affordable cost, the PAMP-4X100 delivers a high-performance audio distribution solution for smaller houses and condominiums. In combination with our new TPMC-3SM touch screens and any 3-Series Control System™, now you can install a luxury Crestron solution at a budget price.



PAMP-4X100 Processor Amplifier

- + Affordable audio distribution for 4 rooms, expandable using multiple units
- + Integrated amplifier delivers 50 W/ch. @ 8 Ohms, 75 W/Ch. @ 4 Ohms
- + Bridgeable for increased output power
- + Six stereo line inputs with loop-thru for easy expansion
- + Works with any Crestron® control system
- + Provides programmable volume, bass, treble, balance, and loudness controls for each room
- + Built-in Cresnet® distribution and power

Sonnex™ 70/100V Option

Easily add transformer-isolated “constant-voltage” speaker outputs to any Sonnex™ system to handle long speaker runs, outdoor speakers, and large zones with multiple speakers.

SAT-70V/100V Sonnex™ Output Transformers

- + Allows connection of multiple speakers to a single amplifier output
- + Enables use of smaller gauge wire for long runs
- + Provides full transformer isolation
- + Rated 120 Watts at 70 or 100 Volts
- + 80 Hz to 20 kHz (-3dB) frequency response
- + 2 and 4 channel models available
- + Single-space rack mountable

Wall and Ceiling Loudspeakers

Ideal for use throughout the home, our new Excite™ speakers offer **excellent sound quality and flexible installation** to complement our Sonnex™ and PAMP multiroom audio systems.



IW5

Excite™ IW5, IW6, & IW8 In-Wall Speakers

- + High-performance 2-way in-wall loudspeakers
- + Polypropylene woofers for deep, solid bass
- + Treated cloth dome tweeters for natural high-end extension
- + Swivel tweeters for precise coverage optimization
- + Steel composition woofer baskets for increased rigidity
- + Paintable ABS plastic baffle with aluminum grilles
- + Easy-to-install dog toggle mounting system
- + Front accessible high and low frequency contour switches
- + Available Sizes: 5.25", 6.5", and 8" woofers
- + Power Handling: 60W (IW5), 75W (IW6), and 125W (IW8)
- + 8 Ohms nominal impedance
- + Sold in pairs



IC5

Excite™ IC5, IC6, & IC8 In-Ceiling Speakers

Similar to Excite IW models except:

- + Flush ceiling-mount design
- + Power Handling: 60W (IC5), 75W (IC6), and 100W (IC8)

Control Systems



Crestron IHT Integrated Home Technology™ is the art and science of bringing systems and devices together in new innovative ways that **save energy and make life more enjoyable**. At the heart of IHT is the new 3-Series Control System™. Every 3-Series™ processor is a network-grade managed server, designed to provide a robust platform for delivering **intelligent whole-house system integration, seamless media distribution, and an enhanced user experience**.

Core 3 OS™

The heart of our new 3-Series Control System™ platform, Core 3 OS affords a distinctively robust, dynamic, and secure platform to **elevate your system designs to higher levels of performance and reliability**.

Compared to other control systems, the 3-Series™ provides a **pronounced increase in processing power and speed** with more memory and rock solid networking and IP control.



Designed for enhanced scalability, the Core 3 OS affords high-speed, real-time multi-tasking to seamlessly run multiple programs simultaneously. This exclusive **modular programming architecture lets programmers independently develop and run device-specific programs** for home theater, AV distribution, security, lighting, HVAC, etc., allowing for the optimization of each program, and allowing changes to be made to one program without affecting the whole.

3-Series™ Mega Control Processor!

This is the control system you've been waiting for! The new CP3 delivers **more power and speed over anything else in the industry** — even the groundbreaking MC3 — and packs it all in a 1U rack-mountable form factor. Users of the popular CP2E will find the CP3 instantly familiar, providing a similar assortment of control ports with a **whole new level of performance and programming flexibility** afforded by the new **Core 3 OS™**.



CP3 3-Series Control System™

- + Core 3 OS™
- + Modular programming architecture
- + Vector floating point coprocessor
- + 512MB RAM & 2GB Flash memory
- + Expandable storage up to 1TB
- + Rear panel MMC memory card slot
- + High-speed USB 2.0 host port
- + Ethernet LAN port and Cresnet® master port
- + Front panel USB computer console port
- + One RS-232/422/485 with hardware and software handshaking
- + Two RS-232 ports with software handshaking only
- + 8 IR/serial, 8 relay, and 8 Versiport I/O ports
- + e-Control® Web server
- + Backwards compatible to run existing SIMPL programs
- + Full Unicode (multi-language) support
- + Increased network throughput and security
- + IIS v.6.0 Web Server
- + IPV6 ready
- + Powered via Cresnet or external power pack
- + 1-space rack-mountable



CP3 (rear panel)

Feature-packed Control Processor

The MC3 is the first of many 3-Series Control Processors to come. More than a mere media controller, the MC3 provides all the benefits of the Core 3 OS™, plus **customizable on-screen display and integrated infiNET EX™ wireless gateway**.



MC3 3-Series Control System™

- + Next generation control system
- + Core 3 OS™ provides substantial performance increase
- + Exclusive modular programming architecture
- + Vector floating point coprocessor and 128KB L2 cache
- + Onboard 256MB RAM & 2GB Flash memory
- + Expandable storage up to 1TB
- + Integrated infiNET EX™ wireless gateway
- + Industry-standard Ethernet and Cresnet® wired communications
- + Supports Crestron touch screens and other devices
- + Available RF and IR control options
- + **NEW!** Customizable OSD user interface
- + Component and composite video outputs
- + Supports Crestron Mobile® control apps for Android™, iPhone® and iPad®
- + Built-in e-Control® Web-based remote control
- + Simplified Web access via myCrestron Dynamic DNS service
- + WAV, MP3, and WMA audio file playback
- + Built-in IR, COM, relay, and digital input ports
- + High-speed USB 2.0 host ports
- + Installer setup via OSD, software, or Web browser
- + Backwards compatible to run existing SIMPL programs
- + Full Unicode (multi-language) support
- + Increased network throughput and security
- + IIS v.6.0 Web Server
- + IPV6 ready

No Equipment Rack Required!

The new TPCS-4SMD harnesses all the power of Core 3™ to provide a **complete touch screen control system in one compact wall mount device**. Perfect for single rooms, condos, townhouses, and hotels, the TPCS-4SM offers a **total control solution in one low-cost, space-saving design**.



TPCS-4SMD Isys® 4.3" Touch Screen Control System

- + All the touch screen capabilities of the TPMC-4SMD
- + Built-in 3-Series™ control processor
- + Powered by Core 3 OS™ and Core 3 UI™
- + Runs a single control system program
- + 10/100 Ethernet and Cresnet® master ports
- + Control port expansion via C2N-IO
- + Supports additional touch screens, keypads, thermostats, lighting dimmers, and other peripherals
- + PoE network powered
- + Surface mount over a 2" square hole or wall box
- + Available in smooth black or white



C2N-IO I/O Expansion Module

- + Mounts within the wall box behind the TPCS-4SMD
- + Provides 1 RS-232, 1 IR/serial, and 2 relay ports
- + Compatible with any Crestron® control system
- + Interfaces via Cresnet® control buss
- + 24VDC Cresnet powered
- + Surface mount bracket included

Touch Screens



Core 3 UI™

Core 3 UI enables the generation of dynamically rich user interfaces with greater power and efficiency. Effortlessly integrate fluid gestures-driven navigation, scrolling lists that bounce, H.264 streaming video, and SIP voice communications. And all this new capability actually comes at a lower cost, **cutting programming time by up to 40%**! As a Crestron dealer, you have the absolute best solutions at your disposal to surpass anything on the market, and now **Core 3 UI empowers you to be even more competitive** by offering truly amazing custom GUIs in less time.

Core 3 UI leverages the power of Adobe® Flash® and other emerging technologies to create a truly dynamic and vibrant touch screen experience. But **Core 3 UI goes way beyond mere Flash object support**, letting designers merge multiple objects and apps on a single touch screen page. And, **Core 3 UI graphics scale perfectly to fit any touch screen** so a single project can be deployed across multiple touch screens of varying sizes without any additional effort.

New **SmartObjects enable rapid GUI development**, letting programmers instantly add controls, user presets, and metadata interfaces for everything from simple keypads to complex media devices and environmental systems. Now adding ADMS™, iPod®, SiriusXM™, or Pandora® to your project is a simple drag and drop operation **turning days of programming into hours or minutes**. Quickly configure a complete whole-house audio system with touch screen controls in every room. Enable user-definable presets for TV, radio, and lighting. Add animated weather objects and user-selectable background themes.

Now the ultimate Crestron touch screen experience is also the ultimate value.

3-in-1 High-Definition Touch Screen Display

As an HDTV display or computer monitor, the V-Panel™ V24-C delivers **superb video performance with native Crestron Core 3™ touch screen control**. Now you can watch TV and movies, comb the Internet for recipes and sports stats, socialize with friends on Facebook®, and control anything in your home, all at once on one big high-definition screen. With in-wall and VESA mount options, the V24-C fits neatly in kitchens, bedrooms, game rooms, and home offices.



V24-C V-Panel™ 24" HD Touch Screen Display

- + Capacitive touch screen
- + 1920 x 1200 WUXGA display resolution
- + High-performance S-PVA display technology
- + Rich, accurate color reproduction
- + High 6ms speed response
- + High contrast ratio, high aperture, high color gamut
- + Ultra-wide 178 degree viewing angles
- + Fully HDCP compliant
- + Digital Graphics Engine (DGE-2) installs up to 330 ft away
- + Also works with DVPHD Digital Video Processor
- + Single wire DigitalMedia 8G+™ connectivity
- + Built-in HD scaler
- + USB keyboard/mouse port
- + Optional annotation pen available
- + VESA 100x200 mounting option
- + Stylish flush wall and furniture mount options
- + Available in white or black

Advanced High-Definition Graphics Engine

The DGE-2 is the engine behind our V-Panel™ HD touch screens, delivering stunning **24-bit Core 3™ graphics performance with dual HDMI® and analog video/computer inputs**, plus streaming video, IP intercom, embedded PC applications, and annotation. The DGE-2 installs at the central equipment location, connecting directly to the head end AV sources, switchers, and control network.



DGE-2 Digital Graphics Engine

- + Touch screen graphics and HD video processing for V-Panels™
- + Installs out-of-sight at the central equipment location
- + Eliminates bulky, unsightly wiring at the V-Panel location
- + Connects to the V-Panel via a single DigitalMedia™ cable
- + High-definition 24-bit graphics powered by Core 3™
- + WAV file customizable audio feedback
- + Multi-format streaming video and audio
- + Dual-window full-motion HD video
- + Allows viewing HDCP protected content
- + Handles HDTV sources up to 1080p60
- + Handles high-res computer RGB up to UXGA/WUXGA
- + Includes HDMI®, RGB, composite, S-Video, and component video inputs
- + Supports 2-way intercom over IP or Crestron Home® wiring
- + Embedded PC applications enable native Web browsing, playing or streaming digital media, viewing digital documents, and accessing and controlling external computers
- + HDMI presentation output enables sharing on-screen content with an audience
- + Built-in annotation enhances presentation capabilities
- + Supports interactive annotation amongst multiple touch screens
- + Provides power to the V-Panel touch screen display
- + Includes USB keyboard/mouse ports plus onscreen keyboard and mouse capability
- + Includes balanced analog audio input and output
- + Crestron Home (CH) CAT5 bidirectional audio port
- + High-Speed Ethernet and Cresnet®

12" and 15" V-Panels™

Sleek and beautiful, our V-Panel™ touch screens are perfectly at home on a table, counter, or desk top, but are equally suited for all kinds of custom installations thanks to integral VESA mount compatibility. V-Panels are available as touch screen displays for use with a DGE-2 Digital Graphics Engine, or as an integrated touch screen with built-in Core 3™ graphics engine.



V15 (tilt)

V12 (wall)

vpanel™

V12 & V15 V-Panel™ HD Touch Screen Displays

- + Designed for use with the DGE-2 Digital Graphics Engine
- + Also works with the DVPHD Digital Video Processor
- + Choice of 12" SVGA or 15" WXGA screen sizes
- + VESA 75 compliant mounting affords endless install options
- + Tabletop tilt models feature clean, modern design
- + Wall mount models install flush in shallow spaces
- + Contemporary appearance blends in anywhere
- + DigitalMedia™ technology significantly reduces wiring
- + Built-in microphone and speakers
- + USB keyboard/mouse port
- + Cool, quiet fanless design
- + Available in white or black

TPMC-V12 & TPMC-V15 V-Panel™ Integrated Touch Screens

Similar features as V12 and V15 except:

- + Integrated digital graphics engine powered by Core 3™
- + Composite video input
- + Single window video display
- + High-Speed Ethernet and Cresnet®
- + Outboard interface module minimizes visible wiring

Touch Screens



Little Touch Screen, Lotsa Possibilities

This tiny touch screen embodies the Crestron philosophy of **style and performance that's practical and functional**. At a very affordable cost, the TPMC-3SMD delivers total control over audio, video, lighting, climate, and other systems in the space of a light switch. You can even **view security cameras on its 2.8" color screen**. Its clean, contoured appearance makes an elegant statement in any custom home.

TPMC-3SMD Isys® 2.8" Designer Touch Screen

- + Modern, contoured appearance
- + Thin profile and small footprint
- + Affordable and easy to install
- + 2.8" color touch screen
- + 16-bit color graphics
- + 240 x 320 resolution
- + Streaming video capability
- + Quick-access pushbuttons
- + White LED button backlighting
- + Single-wire Ethernet connectivity
- + PoE network powered
- + Single-gang wall box mountable
- + Available in smooth black or white

Enhanced VoIP and Video

For their size, the TPMC-4SMD-FD and TPMC-9L pack incredible graphics and control capabilities **powered by the groundbreaking Core 3 UI™**. New Crestron SIP intercom permits **hands-free voice communication over Ethernet** directly between touch screens, and allows the touch screen to behave as a **full-featured telephone extension** as part of a SIP-compatible phone system. Built-in echo cancellation affords **true-duplex performance for seamless hands-free functionality**. Decoding of H.264 streaming video enables enhanced monitoring of Web cameras and other AV sources.



TPMC-4SMD-FD Isys® 4.3" Designer Touch Screen

- + 4.3" widescreen color touch screen
- + 16-bit color graphics powered by Core 3™
- + 800 x 480 WVGA resolution
- + **NEW!** H.264 streaming video
- + **NEW!** Crestron SIP intercom & phone
- + Full-duplex voice communication
- + Built-in microphone and speaker
- + WAV file audio feedback
- + Built-in proximity sensor
- + 10 optional "hard key" pushbuttons
- + White LED button backlighting and feedback
- + Engravable button text
- + Room occupancy sensor option
- + Single-wire Ethernet connectivity
- + PoE network powered
- + Surface mount over a 2" hole or wall box
- + Available in smooth black or white

Touch Screens



TPMC-9L Isys® 9" Wall Mount Touchpanel

- + 9" widescreen color touch screen
- + 16-bit color graphics powered by Core 3™
- + 800 x 480 WVGA resolution
- + **NEW!** H.264 streaming video
- + **NEW!** Crestron SIP intercom & phone
- + Full-duplex voice communication
- + Built-in microphone and speaker
- + WAV file audio feedback
- + 12 optional "hard key" pushbuttons
- + Backlit engravable button text
- + Auto-brightness control
- + Composite video input
- + High-speed Ethernet and Cresnet® communication
- + Flush wall or rack mount
- + Available in textured almond, black, or white

Please visit the Crestron website for our complete selection of advanced touch screen products.

Handheld Remotes

New, Low-cost infiNET EX™ Remote with Color Display

The MLX-3 affords intuitive control for a home theater or an entire custom home through a **brilliant user interface that's simple to use — and just as simple to configure.** Featuring customizable scrolling menus and full-color icons, the MLX-3 makes it easy to select your room, pick a media source, choose a radio station, TV channel, or media title, and even access lighting and other environmental controls — all without having to flip through endless confusing pages of static buttons.



MLX-3 Color LCD Handheld Wireless Remote w/infiNET EX™

- + Rugged and ergonomic handheld design
- + 2" active matrix color LCD display
- + Intuitive menu-driven user interface
- + Easy scroll wheel navigation
- + True-feedback and dynamic text capability
- + Support for over 1000 custom icons and status indicators
- + Text search capability via multi-tap keypad
- + Smooth, responsive hard buttons
- + Adjustable backlit button text
- + Ultra-reliable infiNET EX wireless communications
- + 75 feet RF range (typical)
- + Easy range extension using infiNET EX expanders
- + Instant-Waking™ behavior
- + Works like an IR remote — with all the benefits of 2-way RF!
- + Customizable setup via VT Pro-e®
- + Powered by 4 AA lithium or alkaline batteries

Handheld Remotes

Handheld Touch Screens

The new MTX-3 offers handheld touch screen versatility with ultra-dependable infiNET EX™ wireless technology. Rock-solid 2-way RF communications with Instant-Waking™ ensures **seamless interaction between your home's technology and the way you live**. Control your theater, adjust audio and lighting in any room, browse your media library, and check the security system, all through one stylish, ergonomic device.



MTX-3 Isys® 2.8" Handheld Wireless Touch Screen w/infiNET EX™

- + Sleek and ergonomic handheld design
- + Instant-Waking™ behavior
- + Works like an IR remote — with all the benefits of 2-way RF!
- + Ultra-reliable infiNET EX wireless communications
- + 75 feet RF range (typical)
- + Easy range extension using infiNET EX expanders
- + Built-in speaker for customizable WAV file audio feedback
- + Widely-spaced tactile pushbuttons
- + White EL backlit button text
- + 2.8" active matrix color touchscreen display
- + High display brightness and contrast
- + Wide 150 degrees viewing angle
- + Customizable 16-bit color graphics
- + Dynamic text capability
- + Long-lasting LiPo rechargeable battery pack
- + Low-profile tabletop docking station included

Also available, the TPMC-3X employs Wi-Fi communications to enable wireless video and intercom, dynamic graphics (cover art and photos), and optional wall mount docking station.



TPMC-3X Isys® 2.8" Handheld WiFi Touch Screen

Similar to MTX-3 except:

- + Instant-Waking™ behavior with tilt sensor
- + High-performance 802.11a/b/g Wi-Fi wireless communications
- + 50 feet omnidirectional RF range indoors
- + Wireless video from network cameras and servers
- + Built-in speaker and microphone
- + Wireless IP Intercom capability
- + WAV file customizable audio feedback
- + Dynamic graphics & text capability
- + Stylish tabletop docking station included
- + Optional wall mount docking station available

Handheld Remotes

Rugged Waterproof Remote

This feature-packed waterproof remote takes control beyond—providing **enhanced 2-way wireless control in the bath or shower, around the pool or hot tub, and even on a boat or yacht.** With Crestron Extended Range Wireless technology, the UFO-WPR-3ER can go where no remote has gone before.



UFO-WPR-3ER UFO Waterproof Wireless LCD Remote

- + Waterproof handheld remote w/color LCD display
- + Floats on top of the water's surface, and immersible to 20 feet
- + Safe for use in chlorinated and salt water environments
- + Marine blue or white rubberized exterior is easy to spot and won't slip from grip
- + Included lanyard option affords convenient "remote on a rope" readiness
- + Includes indoor surface-mountable desktop docking station
- + Optional outdoor docking station holds remote securely at any angle and wind speeds beyond 55 mph (47.8 kn)
- + Features a large 16-bit color LCD display
- + Provides true-feedback with dynamic graphics & text
- + Includes tactile buttons for common functions and menu navigation
- + Extensively customizable via VT Pro-e®, SystemBuilder™, and D3 Pro™
- + Features Instant-Waking™ behavior
- + Works like an IR remote — with all the benefits of 2-way RF!
- + Extended range 2.4 GHz RF wireless technology supports up to 200 feet RF range indoors, 1000 ft outdoors
- + Supports roaming for even greater RF coverage

Solid Metal Faceplates for Cameo® Keypads

Clean and contemporary, our Ascent™ faceplates lend a true high-end flair to any Cameo or Cameo Express keypad. Easy to install, Ascent faceplates are available in a tasteful selection of **luxurious metallic finishes** designed to appease the most demanding interior designer.



CBD-FP-ASCENT Ascent™ Solid Metal Faceplates for Cameo® Standard Mount

- + Choice of 7 luxurious colors and finishes
- + Mix and match with any color buttons
- + One-piece solid metal bezel
- + Exceptional fit and finish
- + Multiple cutout designs and button configurations



CBF-FP-ASCENT Ascent™ Solid Metal Faceplates for Cameo® Flush Mount

- + Same features as CBD-FP-ASCENT in 1/3 the space

Keypads and In-Wall Lighting

Cameo® Keypads

Crestron Cameo is a favorite keypad choice for all types of control applications throughout the home. The latest Cameos offer “split-button” configurations and infiNET EX™ wireless technology.



White



Latte



Black



Gray

INET-CBD-EX-P Cameo® Wireless Keypads

- + Available in all 12 Cameo smooth and textured colors
- + Configurable with up to 8 backlit engravable buttons
- + Optional “Split-buttons” in bottom two positions
- + Auto-dimmable backlight and LED intensity
- + White LED feedback indicators
- + Built-in blinking and bargraph logic
- + infiNET EX™ 2-way RF wireless communication
- + Standard wall box mountable
- + **NEW!** Choice of 120, 230, and 277 Volt AC line powered

C2N-CBD-P Cameo® Keypads, Standard Mount

Same features as Cameo Wireless Keypads except:

- + Cresnet® wired communication and power
- + Dual Versiport interface for external sensors

Cameo® Express Keypads

A lower-cost Cameo alternative, Cameo Express provides the features you need to deliver a **high-quality custom keypad solution at a very reasonable price.**



White



Black



Almond

INET-CBD-EX-E Cameo® Express Wireless Keypads

- + Lower cost solution
- + Available in smooth almond, black and white
- + Configurable with up to 8 engravable buttons
- + Optional "Split-buttons" in bottom two positions
- + Green LED feedback indicators
- + Built-in blinking and bargraph logic
- + infiNET EX™ 2-way RF wireless communication
- + Standard wall box mountable
- + **NEW!** Choice of 120 or 230 Volt AC line powered

C2N-CBD-P Cameo® Express Keypads, Standard Mount

Same features as Cameo Express Wireless Keypads except:

- + Cresnet® wired communication and power

Keypads and In-Wall Lighting

Cameo® Flush Mount Keypads

The design that earned Cameo its name, these tiny keypads offer the same control capabilities and configurations as standard mount Cameos in approximately 1/3 of the space.



C2N-CBF-P Cameo® Keypads, Flush Mount

- + Incredibly small footprint and slim profile
- + Available in 5 Cameo textured colors
- + Configurable with up to 8 backlit engravable buttons
- + New “Split-buttons” in bottom two positions
- + Auto-dimmable backlight and LED intensity
- + White LED feedback indicators
- + Built-in blinking and bargraph logic
- + Cresnet® wired communication and power
- + Dual Versiport interface for external sensors

Cameo® In-Wall Dimmers & Switches

The expanded line of Cameo keypads now includes in-wall lighting dimmers and switches featuring infiNET EX™ wireless technology. Cameo lighting controls provide for **extreme versatility and intuitive functionality while achieving a cohesive, contemporary appearance** throughout the home.



CLW-DIMEX-P & CLW-SWEX-P Cameo® Wireless In-Wall Dimmers & Switches

- + Available in all 12 Cameo smooth and textured colors
- + Field replaceable and engravable buttons
- + infiNET EX™ wireless communication
- + Dimmers configurable with up to 4 buttons
- + Switches configurable with 2 buttons or rocker
- + Available slave remote dimmers/switches
- + Screw-clamp connectors for easier installation
- + White LED feedback indicators
- + Stylish bargraph for real-time status feedback
- + Available **CLW-DIMSWEX-P** provides combo dimmer and switch in one device



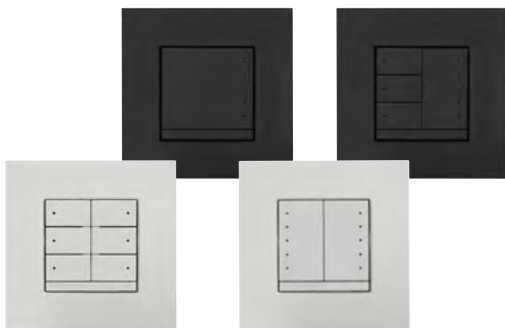
CLW-DIMEX-E & CLW-SWEX-E Cameo® Express Wireless In-Wall Dimmers & Switches

Same features as Cameo Wireless except:

- + Lower cost solution
- + Available in smooth almond, black and white
- + Green LED feedback indicators
- + Does not support slave remotes
- + Available **CLW-DIMSWEX-E** provides combo dimmer and switch in one device
- + **CLW-FANSWEX-E** multi-speed fan control also available

Keypads and In-Wall Lighting

Euro/UK In-Wall Dimmers and Switches



New for CEDIA® EXPO 2011 is a complete line of in-wall dimmers, switches, and keypads for 230 Volt applications. Packed with great features from our Cameo® line—like **engravable and field configurable buttons, out of the box functionality, and infiNET EX™ wireless technology**—CLWI series dimmers and switches flaunt a sleek appearance designed to fit UK and European gang boxes. Available in white or anthracite finishes.

CLWI-DIMUEX In-Wall Universal Phase Dimmer

- + Universal dimming for most 2-wire loads
- + Programmable for custom keypad functionality
- + infiNET EX™ wireless communication
- + Configurable with combinations of pushbuttons and/or rockers
- + White LEDs for real-time status feedback
- + Remote input for multi-way control

CLWI-SWEX In-Wall Switch

- + 2 Amps/AX load rating
- + Programmable for custom keypad functionality
- + infiNET EX™ wireless communication
- + Configurable with combinations of pushbuttons and/or rockers
- + White LEDs for real-time status feedback

CLWI-1SW2EX In-Wall 2-Channel Switch

- + Controls two individual loads
- + 2 Amps/AX load rating per channel
- + Programmable for custom keypad functionality
- + infiNET EX™ wireless communication
- + Configurable with combinations of pushbuttons and/or rockers
- + White LEDs for real-time status feedback

CLWI-DIMFLVEX In-Wall 0-10V Dimmer

- + Controls 0-10V dimmable LED or fluorescent loads
- + Programmable for custom keypad functionality
- + infiNET EX™ wireless communication
- + Configurable with combinations of pushbuttons and/or rockers
- + White LEDs for real-time status feedback

CLWI-KPL In-Wall Lighting Keypads

- + Adds multi-way control for any CLWI dimmer or switch
- + Programmable for custom keypad functionality
- + Three models available
- + infiNET EX™ wireless models available with battery or AC line power
- + Cresnet® wired model includes 2 Versiports for occupancy sensors
- + Configurable with combinations of pushbuttons and/or rockers
- + White LEDs for real-time status feedback

Wireless Lamp Control

Add control of floor lamps and table lamps without running any control wires.



CLW-LDIMEX & CLW-LSWEX Wireless Lamp Dimmers and Switches

- + Robust infiNET EX™ wireless technology
- + Plugs into 120 Volt AC receptacle
- + 1- and 2-channel models available
- + Also functions as a range extenders for MLX-3 and MTX-3 remotes

Keypads and In-Wall Lighting

Room Lighting and Shade Controller

Provides a versatile wall mount lighting controller for home theaters and other rooms with multiple dimmable lighting zones and motorized window shades.



CLS-C6 Series iLux® In-Wall Lighting Systems

- + 6 channels of dimming or switching
- + 6 groups of shade and drape control
- + Supports Crestron C2N-SDC, C2N-SDC-DC, and C2N-SSC-2 shade controllers
- + Linkable for large rooms and multi-room applications
- + Front panel controls with customizable labeling
- + Easy setup from front panel or iLux Designer software
- + Supports optional keypads and IR remote
- + Integrates with control systems via Cresnet® or infiNET EX™
- + Master air-gap relay
- + Optional integrated motion sensor
- + Available in white, black, or almond



C2N-SSC-2 Somfy® Shade Controller

- + Bidirectional serial interface for two Somfy ILT motors
- + Connects to iLux® or any Crestron control system via Cresnet®
- + Affords precision control and feedback of shade positions
- + Surface mountable



C2N-SDC Shade and Drapery Controller

- + Provides a Cresnet® interface for motorized window treatments, skylights, doors, lifts and projection screens
- + Controls two independent 120V AC 3-wire bidirectional motors
- + Built-in timing and interlock logic
- + Flush wall box mountable
- + C2N-SDC-DC 24 Volt DC controller also available

Centralized Lighting

DIN Rail Lighting & Automation

Squeeze the most out of small spaces with DIN rail lighting products. Great for MDUs, condominiums, and custom theaters, **DIN rail modules deliver integrated lighting and motor control at the best price per square inch.** In addition to lighting and motor control, our complete DIN rail line includes a control system processor, versatile control interfaces, and Cresnet® distribution solutions.



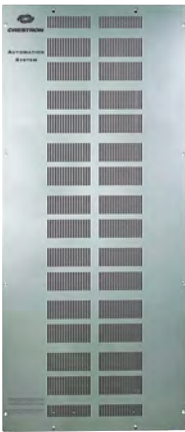
DIN Rail Enclosures & Modules

- + **DIN-EN Enclosures** – metal construction; available with 2, 3, or 6 rails; 18 DIN units wide
- + **DIN-AP2 2-Series Automation Processor** – Cresnet & Ethernet; e-Control, SNMP, & Fusion™ Support; RS-233, IR, Versiport, & relay ports
- + **DIN-1DIM4 Dimmer** – 4-channels, 120-277V operation, zero cross filter, air-gap relay, Cresnet, override input
- + **DIN-1DIMU4 Universal Dimmer** – 4-channels, forward/reverse phase, 120-240V operation, auto load detection, zero cross filter, air-gap relay, Cresnet, override input
- + **DIN-4DIMFLV4 0-10V Fluorescent Dimmer** – 4-channels, switching and 4-wire dimming, 120-240V operation, Cresnet, override input
- + **DIN-DALI-2 DALI Interface** – 2-channels, controls 128 DALI ballasts, Cresnet & Ethernet, override input
- + **DIN-8SW8 High-Voltage Switch** – 8-channels, 120-240V operation, Cresnet, override input
- + **DIN-8SW8-I High-Voltage Switch w/Digital Inputs** – 8-channels, 120-240V operation, Cresnet, override input, contact-sensing inputs
- + **DIN-2MC2 Motor Control** – 2-channels, bidirectional motor control, 120-240V operation, Cresnet, override input
- + **DIN-A08 Analog Output Module** – 8-channels, 0-10V outputs, Cresnet, override input
- + **DIN-I08 Versiport Module** – 8-channels; for external sensors, detectors, alarms, & contact closures; Cresnet

- + **DIN-PWS50 Cresnet® Power Supply** – 50 Watts @ 24V DC
- + **DIN-BLOCK Cresnet® Distribution Block** – 12 termination blocks, split power bus, diagnostic LEDs
- + **DIN-HUB Cresnet® Distribution Hub** – 3-segments, configurable power distribution

Automation Enclosures

Crestron CAEN enclosures deliver high-density, high-performance lighting control for an entire house. A full selection of lighting modules is offered, with over a hundred possible circuits per enclosure.



CAEN Automation Enclosures & Modules

- + **CAEN Enclosures** – metal construction, available with up to 14 module spaces
- + **CLX Lighting Modules** – up to 8 channels per module; 120V or 230V; 2-wire dimming, ELV dimming, high-inrush switching, 2-way motor control, & fan speed control options
- + **CLT Terminal Blocks** – color-coded, din-rail mount, termination for CLX modules
- + **CLTIBN Circuit Breaker Terminal Blocks** – load-side breakers for CAENIB International enclosures, 230V only
- + **PAC2 Automation Processor** – 2-series control system, built-in Cresnet® hub, 8 Versiport and 8 relay ports, expansion card slots, optional LAN interface, built-in universal power supply
- + **PAC2M Mini Automation Processor** – 2-series control system, built-in Cresnet® mini-hub, 4 digital input and 4 relay ports, LAN port, 24 Volt powered
- + **C2N-SPWS300 300W Cresnet® Power Supply** – 300W capacity, 8 managed outputs, remote monitoring
- + **CLX-PWS75 Cresnet® Power Supply Module** – 75W capacity

Energy Management

Crestron Green Light® Energy Monitoring

Now you can monitor energy usage on up to 84 individual branch circuits using this Ethernet-based system.



GLS-EM-MCU Power Meter Control Unit

- + Power metering across 3 phases (main legs)
- + Reports data to control system or Fusion EM™ software
- + Monitors and logs RMS voltage, current, and active power
- + Monitor up to 84 individual branch circuits
- + Installs next to electrical panel
- + Compatible with 100-347 Volt, 2- and 3-phase systems

Energy Management for Hotels and MDUs

Fusion EM™ provides a rich, Web-based graphical user interface for analyzing and regulating energy consumption, keeping building managers informed of trends, usage, and ways to save money.

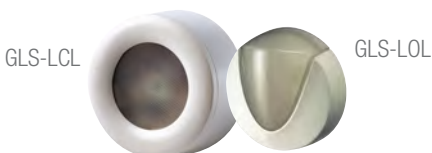


Fusion EM™ Energy Management Software

- + Track real-time energy usage
- + View historical energy consumption over time
- + Control lighting levels, shades, and climate
- + Define temperature set points, lighting, and shade levels based on room occupancy
- + Adjust demand response rules for lighting and HVAC
- + At-a-glance view of room status for entire facility

Occupancy and Light Sensing

Easily **add automation and daylight harvesting** to any Crestron lighting system using photocells and occupancy sensors. **Reduce energy consumption** by dimming the lights when there is natural daylight available from windows and skylights. Automatically turn off lights and adjust HVAC when a room is unoccupied.



GLS-LCL & GLS-LOL Crestron Green Light® Photocells

- + Measure ambient light level from all available light sources
- + Versatile flush or surface mount options
- + 0 to 10 Volt DC analog control output
- + Optional Cresnet® control interface via GLS-SIM



GLS-ODT-C & GLS-ODT-W Dual-Technology Occupancy Sensors

- + Dual-technology motion detection
- + Versatile ceiling & wall mount options
- + Up to 2000 square feet coverage area
- + Extremely accurate and reliable sensing
- + Microprocessor-controlled self-adapting operation
- + Built-in ambient light recognition
- + Optional Cresnet® control interface via GLS-SIM

Energy Management

GLS-OIR-C



GLS-OIR-W



GLS-OIR-C & GLS-OIR-W Passive Infrared Occupancy Sensors

Similar features to GLS-ODT-C & GLS-ODT-W except:

- + Passive infrared motion detection
- + Up to 2500 square feet coverage area



GLS-SIM Sensor Integration Module

- + Provides Cresnet® connectivity for Crestron GLS-series sensors
- + Works with occupancy sensors, photocells, partition sensors, and more
- + Provides 24 Volts DC to power sensors
- + Includes 2 independent sensing inputs
- + Supports contact-closure, DC logic, and 0-10V analog signals
- + Simplified setup via onboard DIP switches
- + Fits in an electrical box behind the sensor

Climate Control

From updating a conventional thermostat for essential HVAC integration, to managing commercial-grade environmental systems in the most high-tech estate or high-rise MDU, **Crestron provides more climate control solutions for streamlining every application.**

Communicating Thermostats

Crestron thermostats install easily in place of any conventional thermostat to enable full integration as part of a total Crestron Integrated Home Technology solution.



CHV-TSTATEX Wireless Thermostat w/infiNET EX™

- + Heat/cool thermostat for baseboard, forced air, and heat pump HVAC systems
- + FCU (Fan Coil Unit) versions available for hotel room applications
- + Crestron system integration via infiNET EX wireless network — no extra wires required
- + Saves on energy costs with advanced programming abilities
- + Supports two remote temperature sensors
- + Fail-safe mode allows continuous operation if control system goes offline
- + Large backlit LCD display
- + Available in white, black, or almond

Climate Control



CHV-TSTAT & CHV-THSTAT Thermostats

- + Heat/cool thermostats with optional humidistat
- + Cresnet® wired control system interface
- + Supports two remote temperature or humidity sensors
- + Large backlit LCD display
- + Available in white, black, or almond

Building Management Systems Interface

Provides an Ethernet based “protocol translator,” allowing a Crestron system to communicate directly with any number of building management protocols.



GLA-BMS Building Management Systems Interface

- + Translates BACnet®, Modbus®, LonWorks® & Metasys® N2 Open to Crestron IP protocol
- + Provides a means to control advanced HVAC systems
- + Ethernet based for easy, localized installation

Media Servers and Radio Tuners

Internet Radio—Now with Pandora®

Using the Crestron TunerRack Modular Multi-Tuner, you can have up to 6 independent radio tuners including the choice of AM/FM, XM® Satellite Radio, and Internet Radio — **now supporting SiriusXM™ and Pandora®**.



CEN-TRACK TunerRack Modular Multi-Tuner

- + Accepts up to 3 ATC-Series tuner cards: dual AM/FM, AM/FM + XM®, or Internet radio
- + Rich search capabilities find all your favorite radio stations, programs, and music with ease
- + Support for metadata enables display of station names, song titles, artists, and other details
- + Includes balanced, unbalanced, and digital audio outputs
- + Native Crestron® system integration via Ethernet



ATC-AUDIONET Internet Radio Tuner Card

- + Occupies a single tuner slot in a CEN-TRACK or Adagio® system
- + Access virtually any streaming radio station in the world
- + **NEW!** Pandora® internet radio with now playing metadata, album cover art, thumbs up/down, and bookmark features
- + SiriusXM™ Internet Radio available with subscription
- + Browse by format, location, or language
- + Search alphanumerically or by keyword
- + Save and organize user favorites for fast access

Media Servers and Radio Tuners

Intermedia Delivery™ – Not just another Media Server

ADMS G2

The revolutionary ADMS™ provides a powerful and fun to use solution for accessing HD movies, videos, photos, and music content from a full array of sources including DVD and Blu-ray Disc®, home movies and photos, downloaded music and videos, Netflix®, Hulu™, YouTube®, and many other Internet TV sources. New for CEDIA EXPO 2011, the ADMS adds Pandora® internet radio, ONVIF IP camera support, and a new lower cost model, the ADMS G2.



ADMS G2 Intermedia Delivery System™

- ✦ A smaller, more affordable ADMS with advanced new features
- ✦ Theater zone includes HDMI®, SPDIF, and stereo analog outputs
- ✦ Two music zones include SPDIF and stereo analog outputs
- ✦ Theater zone provides simultaneous surround sound and stereo mixdown signals
- ✦ All zones support simultaneous digital and analog audio output
- ✦ Supports Dolby® TrueHD, DTS-HD®, or PCM 7.1 surround sound output
- ✦ New support for Pandora® internet radio*
- ✦ Support for ONVIF compliant Web cameras with quad view and sequential switching*
- ✦ Passes CEC commands from the Control System through HDMI
- ✦ Enables wake on LAN and remote shutdown/sleep/hibernate capability
- ✦ Features a single internal 1TB hard drive optimized for HD multimedia
- ✦ Expandable storage via NAS, USB, or Windows® Home Server
- ✦ Add-on disc changers for storage of Blu-ray Discs, BD-Live discs, and DVDs
- ✦ WorldSearch® feature quickly finds any kind of content
- ✦ Built-in secure Web browser with Flash® and Silverlight® plug-ins
- ✦ Increased RAM memory
- ✦ Built-in universal power supply
- ✦ Reduced power consumption
- ✦ Improved cooling for rack and shelf mount applications
- ✦ Compact 2-space 19" rack-mountable chassis

* Coming soon to all ADMS models.



Media Servers and Radio Tuners

Interfaces for iPod®

Crestron offers multiple ways to leverage the popular iPod as a convenient media source for distributing music and video throughout the home.

CEN-IDOCV Interface for Apple® iPod®



CEN-IDOCV-DSW Wall Mount Interface for Apple® iPod®



CEN-ISERVER Crestron iServer® Network Audio Server



PROCISE™

PROCISE delivers a **high-definition 7.3 surround sound solution for the most demanding custom theaters and home entertainment systems.** Using the finest components and a propriety combination of advanced features and innovative technologies, PROCISE fulfills the myriad design challenges and performance expectations of the high-end custom market.



PSPHD PROCISE High-Definition Professional Surround Sound Processor

- + 7.3 HD surround sound processing
- + Multiple subwoofer support
- + Audyssey MultEQ® XT technology
- + Audyssey Dynamic EQ® and Dynamic Volume®
- + HDMI® connectivity
- + HD 1080p video switching
- + Studio grade performance
- + Supports Dolby® TrueHD and DTS-HD Master Audio™ 7.1 formats
- + QuickSwitch HD® key management and switching
- + Discrete signal processing for every speaker and subwoofer
- + Integrated 3-channel line mixer and speech processor
- + Mono and stereo down-mix outputs
- + Flexible routing of any mixer input to any output
- + Inputs for HDMI, AES/EBU, S/PDIF optical and coaxial sources
- + Inputs for stereo and multi-channel analog sources
- + XLR balanced inputs and outputs
- + Native Crestron control
- + Crestron PROCISE Tools software
- + DigitalMedia™ system integration
- + High-end appearance
- + Automatic pairing with **PROAMP HD Professional Surround Sound Amplifier**

High-End Home Theater

Multi-Window Processor and Annotator

Envision the ultimate home theater with multiple television channels, Blu-ray movies, computer multimedia, and video games all displayed simultaneously on one high-definition screen. Imagine the ability to **change images at will and annotate on screen** like a sports commentator with the stroke of your finger. And picture it all in astounding detail and rich, life-like color.

Now you've imagined the DVPHD High-Definition Digital Video Processor from Crestron® — the ultimate multi-window video processor that **displays up to eight high-res computer and HD video signals** within a fully-customizable graphical environment, with dynamic transition effects, real-time annotation, and touch screen control!



DVPHD High-Definition Digital Video Processor

- + Up to 8 fully-scalable HD video windows
- + Real-time annotation over video and computer images
- + QuickSwitch HD® seamless switching with transition effects
- + Modular design supporting a full range of input types
- + Supports DVI, HDMI, and RGB displays and touch screens
- + Provides a multi-window HD graphics engine for V-Panels™
- + Fully customizable, high-definition 24-bit graphics
- + Professional high-definition scaling and de-interlacing
- + Built-in test patterns for easy setup and fine-adjustment

Multimedia Presentation Comes Home

Designed for corporate boardrooms and college classrooms, the new DMPS-300-C is also **ideal for expanding the home entertainment experience in a custom theater, game room, or back yard party area.** Featuring high-definition digital AV signal routing, microphone mixing, audio DSP, DigitalMedia 8G+™ connectivity, and a built-in control system, the DMPS-300-C offers great potential for integrating multimedia and live entertainment as part of a complete home system.



DMPS-300-C DigitalMedia™ Presentation System 300

- + High-Definition multimedia system switcher, mic mixer, audio DSP, amplifier, and control system
- + Integrated DigitalMedia switcher featuring DM 8G+™ technology
- + Matrix signal routing for up to 7 simultaneous sources and 4 displays
- + Handles HDMI®, DVI, DisplayPort Multimode, and SPDIF digital sources
- + Handles RGB, composite, S-Video, component, and stereo audio analog sources
- + Auto-detecting, auto-switching inputs for all types of video and audio sources
- + Built-in 6-channel gated microphone mixing w/DSP
- + Versatile audio signal mixing and routing to 7 separate outputs
- + Audio-follow-video or breakaway switching for all inputs
- + HDMI audio signal extraction and embedding
- + Three stereo analog outputs with independent DSP per output
- + Built-in 40 Watt amplifier, 8 Ohm or 70/100V selectable
- + DigitalMedia 8G+ connectivity with PoDM
- + QuickSwitch HD® technology
- + Automatic AV signal format management
- + Built-in 2-Series control system
- + Easy setup and diagnostics via front panel or software
- + 3-space 19-inch rack-mountable

Commercial AV Products

Energy-Efficient Power Amplifiers

Crestron is proud to introduce its new line of **high-performance, energy-efficient power amplifiers**. 100% Crestron engineered and built, these amplifiers are designed to conserve energy without compromising on audio performance. Featuring a high-efficiency amp topology and active power factor corrected power supply, plus additional power-saving features and configurable outputs on every channel, **these amplifiers offer a very cost-effective and space-saving solution** for all types of demanding applications.



All Models

- + Ultra-efficient space-saving design
- + Low total cost of ownership
- + High-output power, low noise, low distortion performance
- + Individual channel power control via jumper or remote contact
- + Auto power-down after 30 minutes of no signal
- + Instant auto power-on when an input signal is detected
- + No inrush current during power-up
- + Over current and DC offset protection per output
- + Thermal protection on the power supply and each channel
- + Front panel signal, clip, and fault indicators per channel
- + Professional balanced inputs
- + Detachable terminal block connectors
- + Rear panel ± 10 dB input level controls
- + Convection cooled - no noisy fans
- + Single-space 1U rack mountable
- + Universal power supply with active power factor correction

AMP-2210S 2x210W Commercial Power Amplifier 4/8Ω

AMP-3210S 3x210W Commercial Power Amplifier, 4/8Ω

- + Choice of 2 or 3 channel models
- + Each channel rated 210W@4Ω and 120W@8Ω
- + Channels 1 and 2 bridgeable for 420W@8Ω
- + Lightweight and under 11 inches deep

AMP-2210T 2x210W Commercial Power Amplifier, 4/8Ω or 70/100V

AMP-3210T 3x210W Commercial Power Amplifier, 4/8Ω or 70/100V

- + Choice of 2 or 3 channel models
- + Each channel selectable for 4/8Ω, 70V, or 100V operation
- + Each channel rated 210W@4Ω, 120W@8Ω, and 120W@70/100V
- + Channels 1 and 2 bridgeable for 420W@8Ω
- + Transformer isolated 70 and 100 Volt outputs
- + Under 15 inches deep

AMP-2210HT 2x210W Commercial Power Amplifier, 4/8Ω or High-Power 70V

- + Each channel selectable for 4/8Ω or 70V
- + Each channel rated 210W@4Ω, 120W@8Ω, and 210W@70V
- + Under 15 inches deep

800 MHz High-Bandwidth Matrix Switchers

Crestron High-Bandwidth RGB Matrix Switchers deliver **extreme performance for the most demanding analog applications**. With class-leading 800 MHz bandwidth, enhanced audio DSP, very low power consumption, and native Crestron system integration, these switchers easily surpass any requirement for high-performance, high-resolution analog video and computer signal routing.



CEN-RGBHVHB Series High-Bandwidth RGB Matrix Switchers

- + Ultra high-bandwidth matrix switchers
- + 800 MHz video bandwidth (-3dB)
- + Incredibly wide response and low crosstalk
- + Stereo audio signal routing with breakaway
- + Audio DSP with volume, tone, and graphic EQ
- + Paging mode with automatic ducking
- + Professional balanced audio inputs and outputs
- + Audio input level compensation
- + Video input sync detection
- + Video-follow-sync switching technology
- + Adjustable video and audio blanking
- + Selectable input sync impedance on all inputs
- + LCD front panel for easy setup and standalone operation
- + Crestron system integration via Cresnet or Ethernet
- + Very low power consumption and a quiet fanless design
- + Five chassis sizes from 8x4 to 16x16
- + 3-space rack mountable (6-space for 16x16)

Interface Cables and Wall Plates

Locking HDMI® Cable

These cables provide a perfect connection for HD devices. The PerfectLock™ HDMI connector **keeps the cable securely locked** when plugged into any Type A receptacle, yet is easily disengaged with a simple pull of the connector body.



CBL-HD-LOCK Locking High-Speed HDMI® Cable

- + High-speed HDMI certified
- + PerfectLock™ connector with 25 lb retention
- + CL2/FT4 rated for in-wall use
- + Supports 3D, Deep Color, 4K, and audio return channel
- + Available in a variety of lengths

Interface Cables

Crestron® Certified Interface Cables **complete the total Crestron package**, ensuring high-performance and end-to-end Crestron quality for every installation.



CBL-Series Crestron® Certified Interface Cables

- + High-speed HDMI, SPDIF, DVI, VGA, analog audio, composite and component video cables
- + HDMI to DVI adapter cables
- + Stylish 24k gold-plated connectors
- + High-flex CL3-rated jackets
- + Available in lengths from 1.5 to 30 ft

Interface Cables and Wall Plates

Wall Plates

Media Presentation Wall Plates are offered with a range of connectors to support all types of analog and digital video, audio, and control signals.



MP-WP150-B



MP-WP100-W



MP-WP187-S-A

MP-WP Series Media Presentation Wall Plates

- + HDMI®, DVI, DisplayPort, VGA, and analog AV wall plates
- + Crestron DigitalMedia™, QuickMedia™, and Cresnet® wall plates
- + **NEW!** DM 8G+™, DM 8G® Fiber, and Ethernet wall plates
- + 24k gold-plated modular connectors
- + 1-gang standard wall box mountable
- + Gangable for custom interface applications
- + Fit off-the-shelf decorative face plates
- + **NEW!** Now available in almond, black, or white



MPI-WP120-120



MPI-WP150-122



MPI-WP181-C-120

MPI-WP Series International Media Presentation Wall Plates

- + HDMI®, DVI, DisplayPort, VGA, Ethernet, and analog AV wall plates
- + Crestron DM 8G+™, DM 8G® Fiber, QuickMedia™, and Cresnet® wall plates
- + 24k gold-plated modular connectors
- + UK and European wall box mountable
- + Gangable for custom interface applications
- + Available in white or anthracite

350MHz Data-Grade Shielded CAT5e

For digital multimedia or Ethernet data networking, DM 8G[®] Cable provides **the finest shielded CAT5e on the market**. Every spool is individually certified to ANSI/TIA/EIA-568-B.2 Category 5e, and tested to 350 MHz bandwidth, ensuring **ultimate performance for demanding AV and data network applications**.



DM-CBL-8G DigitalMedia 8G[™] Cable

- + Ultimate performance for HD AV and data networking
- + Offers Crestron guaranteed performance for DigitalMedia 8G+[™] and Sonnex[™] applications
- + Excels wherever shielded CAT5e cable is required
- + 350 MHz certified
- + 100% foil shield ensures very low EMI/RFI interference
- + Available in plenum and non-plenum
- + Fully-shielded RJ45 connectors and crimp tool also available

Crestron Offices

In addition to our world headquarters in Rockleigh, New Jersey, there are offices worldwide serving over 90 countries.

Crestron Headquarters
15 Volvo Drive
Rockleigh, New Jersey 07647
Phone 1: 800.237.2041 Phone 2: 201.767.3400

Crestron Mid-Atlantic
6990 Columbia Gateway Drive
Suite 120
Columbia, Maryland 21046
Phone 1: 866.537.6298 Phone 2: 410.910.0072

Crestron South
11660 Alpharetta Highway
Suite 740
Roswell, Georgia 30076
Phone 1: 877.339.0060

Crestron Orlando
1060 Maitland Center Commons
Suite 150
Maitland, Florida 32751
Phone 1: 866.273.7876 Phone 2: 407.261.0459

Crestron Fort Lauderdale
1501 NW 49th Street
Suite 100
Ft. Lauderdale, Florida 33309
Phone 1: 866.448.5098

Crestron Midwest
617 East Golf Road
Suite 101
Arlington Heights, Illinois 60005
Phone 1: 800.949.3465 Phone 2: 847.437.6650

Crestron Southwest
1200 Lakeside Parkway
Suite 250
Flower Mound, Texas 75028
Phone 1: 866.999.1300 Phone 2: 972.538.2638

Crestron Mountain States – Denver, Colorado
5995 Greenwood Plaza Blvd
Suite 190
Greenwood Village, Colorado 80111
Phone 1: 866.947.6443 Phone 2: 303-305-4080

Crestron West
5660 Katella Avenue
Suite 150
Cypress, California 90630
Phone 1: 800.827.2188

Crestron West – Northern CA
100 Pelican Way
Suite D
San Rafael, California 94901
Phone 1: 866.634.0904

Crestron Las Vegas
3763 Howard Hughes Parkway
Suite 120
Las Vegas, Nevada 89169
Phone 1: 866.634.0903

Crestron Phoenix
4050 E. Cotton Center Blvd
Suite 77
Phoenix, Arizona 85040
Phone 1: 866.278.0676

Crestron Canada
5250 Satellite Dr.
Unit 16
Mississauga, Ontario L4W 5G5
Canada
Phone 1: 877.732.7378 Phone 2: 905.212.7714

Crestron Offices

Crestron's international sales offices are owned and operated by Crestron staff and are all focused on the success of selling and supporting Crestron products. This unique philosophy for international distribution results in superior control and consistent support of the Crestron product line.

International

Mexico

India

Brazil

China

United Kingdom

Hong Kong

Belgium

Macau

France

Malaysia

Spain

Singapore

Germany

Japan

Italy

South Korea

Russia

Taiwan

Saudi Arabia

Australia

United Arab Emirates



| crestron.com



we make
it **easy**

Crestron Electronics, Inc. 15 Volvo Drive | Rockleigh, NJ 07647
Tel: 800.237.2041 / 201.767.3400 | crestron.com

Products manufactured in the United States.

Printed in USA Doc. 4554 6/11

All brand names, product names and trademarks are the property of their respective owners. Specifications subject to change without notice.

© 2011 Crestron Electronics, Inc.